

**Anti-CD2 Reference Antibody (siplizumab)
Recombinant Antibody
Catalog # APR10316****Specification**

Anti-CD2 Reference Antibody (siplizumab) - Product Information

Application	FC, Kinetics, Animal Model
Primary Accession	P06729
Reactivity	Human
Clonality	Monoclonal
Isotype	IgG1
Calculated MW	145 KDa

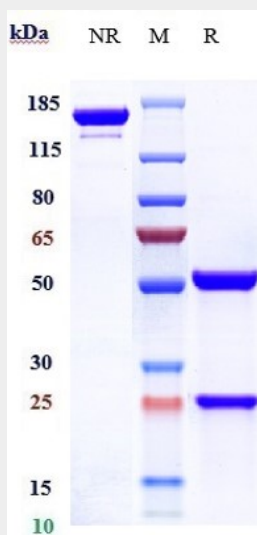
Anti-CD2 Reference Antibody (siplizumab) - Additional Information**Target/Specificity**
CD2**Endotoxin**
< 0.001EU/ µg,determined by LAL method.**Conjugation**
Unconjugated**Expression system**
CHO Cell**Format**
Purified monoclonal antibody supplied in PBS, pH6.0, without preservative.This antibody is purified through a protein A column.**Anti-CD2 Reference Antibody (siplizumab) - Protein Information****Name** CD2**Synonyms** SRBC**Function**
CD2 interacts with lymphocyte function-associated antigen CD58 (LFA-3) and CD48/BCM1 to mediate adhesion between T-cells and other cell types. CD2 is implicated in the triggering of T-cells, the cytoplasmic domain is implicated in the signaling function.**Cellular Location**
Cell membrane; Single-pass type I membrane protein**Tissue Location**
Expressed in natural killer cells (at protein level).

Anti-CD2 Reference Antibody (siplizumab) - Protocols

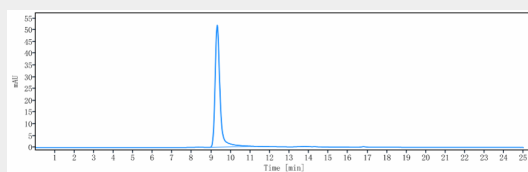
Provided below are standard protocols that you may find useful for product applications.

- [Western Blot](#)
- [Blocking Peptides](#)
- [Dot Blot](#)
- [Immunohistochemistry](#)
- [Immunofluorescence](#)
- [Immunoprecipitation](#)
- [Flow Cytometry](#)
- [Cell Culture](#)

Anti-CD2 Reference Antibody (siplizumab) - Images



Anti-CD2 Reference Antibody (siplizumab) on SDS-PAGE under reducing (R) condition. The gel was stained with Coomassie Blue. The purity of the protein is greater than 95%



The purity of Anti-CD2 Reference Antibody (siplizumab) is more than 100% ,determined by SEC-HPLC.