

**Anti-SLITRK6 Reference Antibody (Sirtratumab vedotin)
Recombinant Antibody
Catalog # APR10325****Specification**

Anti-SLITRK6 Reference Antibody (Sirtratumab vedotin) - Product Information

Application	FC, E, FTA
Primary Accession	Q9H5Y7
Reactivity	Cynomolgus, Human
Clonality	Monoclonal
Isotype	IgG1
Calculated MW	145 KDa

Anti-SLITRK6 Reference Antibody (Sirtratumab vedotin) - Additional Information**Target/Specificity**
SLITRK6**Endotoxin**
< 0.001EU/ µg,determined by LAL method.**Conjugation**
MMAE**Expression system**
CHO Cell**Format**
Purified monoclonal antibody supplied in PBS, pH6.0, without preservative.This antibody is purified through a protein A column.**Storage**
-80°C for 2 years under sterile conditions □ -20°C for 1 year under sterile conditions □ Avoid repeated freeze-thaw cycles.**Anti-SLITRK6 Reference Antibody (Sirtratumab vedotin) - Protein Information****Name** SLITRK6**Function**
Regulator of neurite outgrowth required for normal hearing and vision.**Cellular Location**
Cell membrane; Single-pass type I membrane protein**Tissue Location**
In adult brain, highly expressed in putamen with no expression in cerebral cortex. Expressed in adult and fetal lung and fetal liver. Also expressed at high levels in some brain tumors including

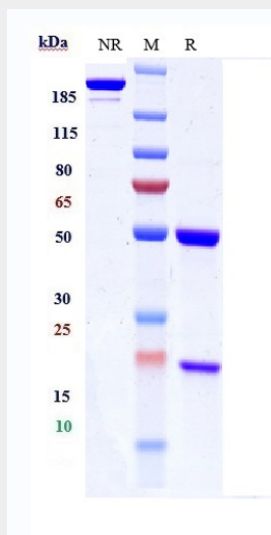
medulloblastomas and primitive neuroectodermal tumors

Anti-SLITRK6 Reference Antibody (Sirtratumab vedotin) - Protocols

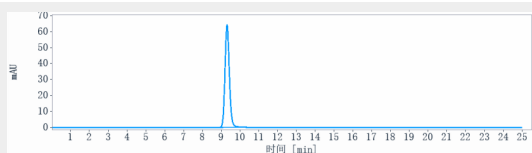
Provided below are standard protocols that you may find useful for product applications.

- [Western Blot](#)
- [Blocking Peptides](#)
- [Dot Blot](#)
- [Immunohistochemistry](#)
- [Immunofluorescence](#)
- [Immunoprecipitation](#)
- [Flow Cytometry](#)
- [Cell Culture](#)

Anti-SLITRK6 Reference Antibody (Sirtratumab vedotin) - Images



Anti-SLITRK6 Reference Antibody (Sirtratumab vedotin) on SDS-PAGE under reducing (R) condition. The gel was stained with Coomassie Blue. The purity of the protein is greater than 90%



The purity of Anti-SLITRK6 Reference Antibody (Sirtratumab vedotin) is more than 95%, determined by SEC-HPLC.