

**Anti-Siglec-15 / CD33L3 Reference Antibody (AB-25E9)
Recombinant Antibody
Catalog # APR10326****Specification**

Anti-Siglec-15 / CD33L3 Reference Antibody (AB-25E9) - Product Information

Application	FC, Kinetics, Animal Model
Primary Accession	Q6ZMC9
Reactivity	Human
Clonality	Monoclonal
Isotype	IgG1
Calculated MW	150 KDa

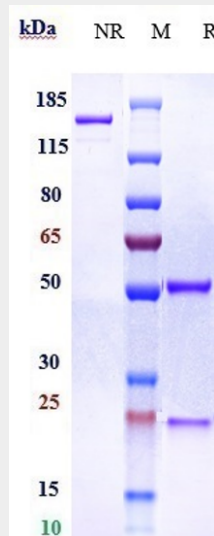
Anti-Siglec-15 / CD33L3 Reference Antibody (AB-25E9) - Additional Information**Target/Specificity**
Siglec-15 / CD33L3**Endotoxin**
< 0.001EU/ µg,determined by LAL method.**Conjugation**
Unconjugated**Expression system**
CHO Cell**Format**
Purified monoclonal antibody supplied in PBS, pH6.0, without preservative.This antibody is purified through a protein A column.**Anti-Siglec-15 / CD33L3 Reference Antibody (AB-25E9) - Protein Information****Name** SIGLEC15**Synonyms** CD33L3**Function**
Binds sialylated glycoproteins.**Cellular Location**
Membrane; Single-pass type I membrane protein.**Tissue Location**
Expressed in macrophage and/or dendritic cells of spleen and lymph nodes

Anti-Siglec-15 / CD33L3 Reference Antibody (AB-25E9) - Protocols

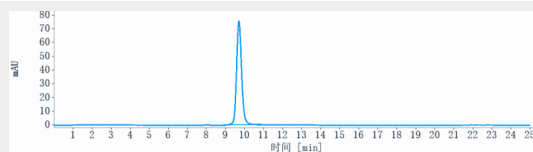
Provided below are standard protocols that you may find useful for product applications.

- [Western Blot](#)
- [Blocking Peptides](#)
- [Dot Blot](#)
- [Immunohistochemistry](#)
- [Immunofluorescence](#)
- [Immunoprecipitation](#)
- [Flow Cytometry](#)
- [Cell Culture](#)

Anti-Siglec-15 / CD33L3 Reference Antibody (AB-25E9) - Images



Anti-Siglec-15 / CD33L3 Reference Antibody (AB-25E9) on SDS-PAGE under reducing (R) condition. The gel was stained with Coomassie Blue. The purity of the protein is greater than 90%



The purity of Anti-Siglec-15 / CD33L3 Reference Antibody (AB-25E9) is more than 95%, determined by SEC-HPLC.