

Anti-SLAMF6 / CD352 Reference Antibody (SGN-CD352A)
Recombinant Antibody
Catalog # APR10329**Specification**

Anti-SLAMF6 / CD352 Reference Antibody (SGN-CD352A) - Product Information

Application	FC, Kinetics, Animal Model
Primary Accession	O96DU3
Reactivity	Human
Clonality	Monoclonal
Isotype	IgG1
Calculated MW	145.9 KDa

Anti-SLAMF6 / CD352 Reference Antibody (SGN-CD352A) - Additional Information**Target/Specificity**
SLAMF6 / CD352**Endotoxin**
< 0.001EU/ µg,determined by LAL method.**Conjugation**
Unconjugated**Expression system**
CHO Cell**Format**
Purified monoclonal antibody supplied in PBS, pH6.0, without preservative.This antibody is purified through a protein A column.**Anti-SLAMF6 / CD352 Reference Antibody (SGN-CD352A) - Protein Information****Name** SLAMF6**Synonyms** KALI**Function**
Self-ligand receptor of the signaling lymphocytic activation molecule (SLAM) family. SLAM receptors triggered by homo- or heterotypic cell-cell interactions are modulating the activation and differentiation of a wide variety of immune cells and thus are involved in the regulation and interconnection of both innate and adaptive immune response. Activities are controlled by presence or absence of small cytoplasmic adapter proteins, SH2D1A/SAP and/or SH2D1B/EAT-2. Triggers cytolytic activity only in natural killer cells (NK) expressing high surface densities of natural cytotoxicity receptors (PubMed:11489943, PubMed:16920955). Positive signaling in NK cells implicates phosphorylation of VAV1. NK cell activation seems to depend on SH2D1B and not on SH2D1A (PubMed:<a

[16920955](http://www.uniprot.org/citations/16920955)). In conjunction with SLAMF1 controls the transition between positive selection and the subsequent expansion and differentiation of the thymocytic natural killer T (NKT) cell lineage (By similarity). Promotes T-cell differentiation into a helper T-cell Th17 phenotype leading to increased IL-17 secretion; the costimulatory activity requires SH2D1A (PubMed:[16920955](http://www.uniprot.org/citations/16920955)), PubMed:[22184727](http://www.uniprot.org/citations/22184727)). Promotes recruitment of RORC to the IL-17 promoter (PubMed:[22989874](http://www.uniprot.org/citations/22989874)). In conjunction with SLAMF1 and CD84/SLAMF5 may be a negative regulator of the humoral immune response. In the absence of SH2D1A/SAP can transmit negative signals to CD4(+) T- cells and NKT cells. Negatively regulates germinal center formation by inhibiting T-cell:B-cell adhesion; the function probably implicates increased association with PTPN6/SHP-1 via ITSMs in absence of SH2D1A/SAP. However, reported to be involved in maintaining B-cell tolerance in germinal centers and in preventing autoimmunity (By similarity).

Cellular Location

Cell membrane; Single-pass type I membrane protein

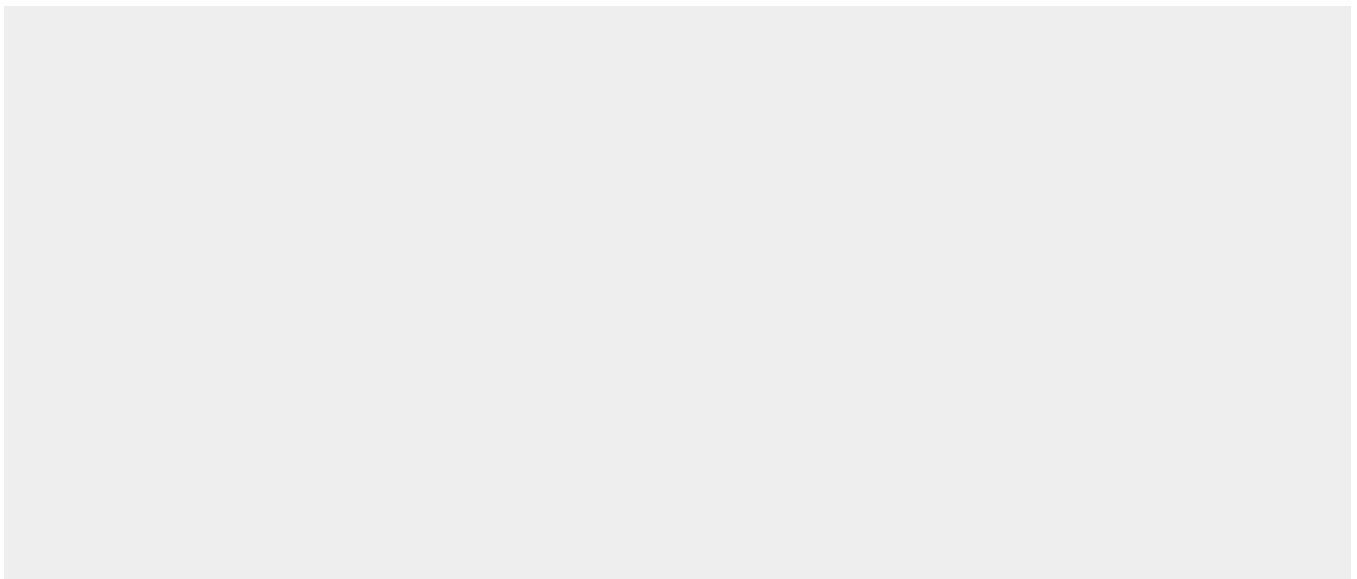
Tissue Location

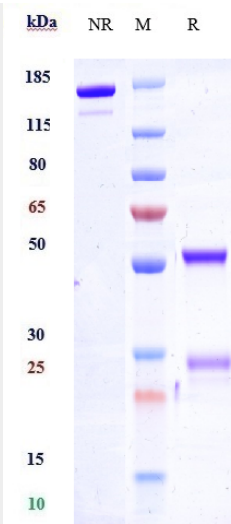
Expressed by all (resting and activated) natural killer cells (NK), T- and B-lymphocytes (PubMed:11489943). Increased surface expression on T-cells of systemic lupus erythematosus (SLE) patients (PubMed:22184727).

Anti-SLAMF6 / CD352 Reference Antibody (SGN-CD352A) - Protocols

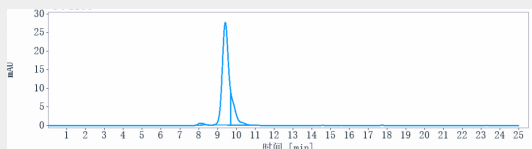
Provided below are standard protocols that you may find useful for product applications.

- [Western Blot](#)
- [Blocking Peptides](#)
- [Dot Blot](#)
- [Immunohistochemistry](#)
- [Immunofluorescence](#)
- [Immunoprecipitation](#)
- [Flow Cytometry](#)
- [Cell Culture](#)

Anti-SLAMF6 / CD352 Reference Antibody (SGN-CD352A) - Images



Anti-SLAMF6 / CD352 Reference Antibody (SGN-CD352A) on SDS-PAGE under reducing (R) condition. The gel was stained with Coomassie Blue. The purity of the protein is greater than 95%



The purity of Anti-SLAMF6 / CD352 Reference Antibody (SGN-CD352A) is more than 95%, determined by SEC-HPLC.