

Anti-F11 / Factor XI Reference Antibody (abelacimab)
Recombinant Antibody
Catalog # APR10330**Specification**

Anti-F11 / Factor XI Reference Antibody (abelacimab) - Product Information

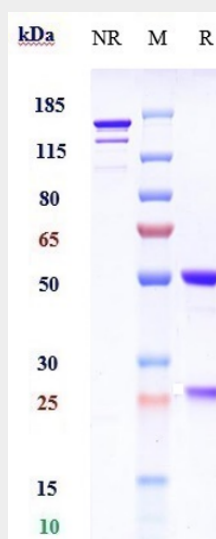
Application	FC, Kinetics, Animal Model
Primary Accession	P03951
Reactivity	Human
Clonality	Monoclonal
Isotype	IgG1
Calculated MW	147.32 KDa

Anti-F11 / Factor XI Reference Antibody (abelacimab) - Additional Information**Target/Specificity**
F11 / Factor XI**Endotoxin**
< 0.001EU/ µg,determined by LAL method.**Conjugation**
Unconjugated**Expression system**
CHO Cell**Format**
Purified monoclonal antibody supplied in PBS, pH6.0, without preservative.This antibody is purified through a protein A column.**Anti-F11 / Factor XI Reference Antibody (abelacimab) - Protein Information****Name** F11**Function**
Factor XI triggers the middle phase of the intrinsic pathway of blood coagulation by activating factor IX.**Cellular Location**
Secreted.**Tissue Location**
Isoform 2 is produced by platelets and megakaryocytes but absent from other blood cells**Anti-F11 / Factor XI Reference Antibody (abelacimab) - Protocols**

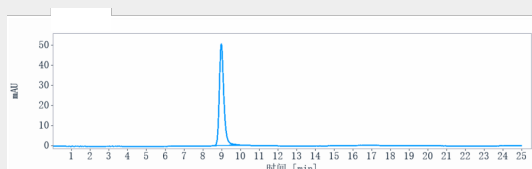
Provided below are standard protocols that you may find useful for product applications.

- [Western Blot](#)
- [Blocking Peptides](#)
- [Dot Blot](#)
- [Immunohistochemistry](#)
- [Immunofluorescence](#)
- [Immunoprecipitation](#)
- [Flow Cytometry](#)
- [Cell Culture](#)

Anti-F11 / Factor XI Reference Antibody (abelacimab) - Images



Anti-F11 / Factor XI Reference Antibody (abelacimab) on SDS-PAGE under reducing (R) condition. The gel was stained with Coomassie Blue. The purity of the protein is greater than 95%



The purity of Anti-F11 / Factor XI Reference Antibody (abelacimab) is more than 95% ,determined by SEC-HPLC.