

**Anti-P-Selectin / CD62p Reference Antibody (crizanlizumab)
Recombinant Antibody
Catalog # APR10331****Specification**

Anti-P-Selectin / CD62p Reference Antibody (crizanlizumab) - Product Information

| | |
|-------------------|----------------------------|
| Application | FC, Kinetics, Animal Model |
| Primary Accession | P49908 |
| Reactivity | Human, Mouse |
| Clonality | Monoclonal |
| Isotype | IgG2SA |
| Calculated MW | 145 KDa |

Anti-P-Selectin / CD62p Reference Antibody (crizanlizumab) - Additional Information**Target/Specificity**

P-Selectin / CD62p

Endotoxin

< 0.001EU/ µg,determined by LAL method.

Conjugation

Unconjugated

Expression system

CHO Cell

Format

Purified monoclonal antibody supplied in PBS, pH6.0, without preservative.This antibody is purified through a protein A column.

Anti-P-Selectin / CD62p Reference Antibody (crizanlizumab) - Protein Information**Name** SELENOP {ECO:0000303|PubMed:27645994, ECO:0000312|HGNC:HGNC:10751}**Function**

Might be responsible for some of the extracellular antioxidant defense properties of selenium or might be involved in the transport of selenium. May supply selenium to tissues such as brain and testis.

Cellular LocationSecreted. Note=Passes from plasma into the glomerular filtrate where it is removed by endocytosis mediated by LRP2 in the proximal tubule epithelium.
{ECO:0000250|UniProtKB:P70274}**Tissue Location**

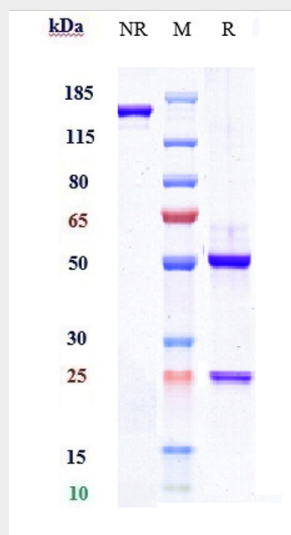
Made in the liver and heart and secreted into the plasma. It is also found in the kidney

Anti-P-Selectin / CD62p Reference Antibody (crizanlizumab) - Protocols

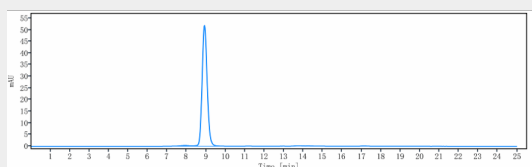
Provided below are standard protocols that you may find useful for product applications.

- [Western Blot](#)
- [Blocking Peptides](#)
- [Dot Blot](#)
- [Immunohistochemistry](#)
- [Immunofluorescence](#)
- [Immunoprecipitation](#)
- [Flow Cytometry](#)
- [Cell Culture](#)

Anti-P-Selectin / CD62p Reference Antibody (crizanlizumab) - Images



Anti-P-Selectin / CD62p Reference Antibody (crizanlizumab) on SDS-PAGE under reducing (R) condition. The gel was stained with Coomassie Blue. The purity of the protein is greater than 90%



The purity of Anti-P-Selectin / CD62p Reference Antibody (crizanlizumab) is more than 95%, determined by SEC-HPLC.