

**Anti-CDH11 / Cadherin-11 Reference Antibody (RG6125)  
Recombinant Antibody  
Catalog # APR10333****Specification**

---

**Anti-CDH11 / Cadherin-11 Reference Antibody (RG6125) - Product Information**

Application	FC, E, FTA
Primary Accession	<a href="#">P55287</a>
Reactivity	Human, Mouse
Clonality	Monoclonal
Isotype	IgG2SA
Calculated MW	145 KDa

**Anti-CDH11 / Cadherin-11 Reference Antibody (RG6125) - Additional Information****Target/Specificity**  
CDH11 / Cadherin-11**Endotoxin**  
< 0.001EU/ µg,determined by LAL method.**Conjugation**  
Unconjugated**Expression system**  
CHO Cell**Format**  
Purified monoclonal antibody supplied in PBS, pH6.0, without preservative.This antibody is purified through a protein A column.**Storage**  
-80°C for 2 years under sterile conditions □ -20°C for 1 year under sterile conditions □ Avoid repeated freeze-thaw cycles.**Anti-CDH11 / Cadherin-11 Reference Antibody (RG6125) - Protein Information****Name** CDH11**Function**  
Cadherins are calcium-dependent cell adhesion proteins. They preferentially interact with themselves in a homophilic manner in connecting cells; cadherins may thus contribute to the sorting of heterogeneous cell types. Required for proper focal adhesion assembly (PubMed:<a href="http://www.uniprot.org/citations/33811546" target="\_blank">33811546</a>). Involved in the regulation of cell migration (PubMed:<a href="http://www.uniprot.org/citations/33811546" target="\_blank">33811546</a>).**Cellular Location**

Cell membrane; Single-pass type I membrane protein

#### **Tissue Location**

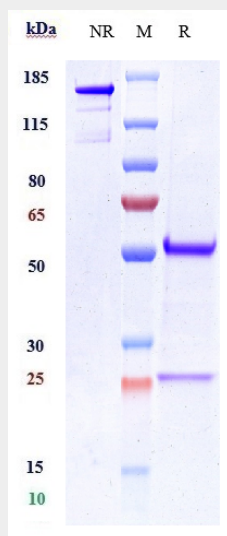
Expressed mainly in brain but also found in other tissues. Expressed in neuroblasts. In the embryo from 67 to 72 days of gestation, detected at high levels in facial mesenchyme including the central palatal mesenchyme, dental mesenchyme, the eye and optic muscle, and the tongue (at protein level) (PubMed:33811546)

#### **Anti-CDH11 / Cadherin-11 Reference Antibody (RG6125) - Protocols**

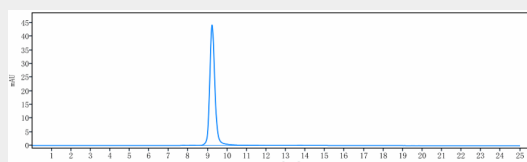
Provided below are standard protocols that you may find useful for product applications.

- [Western Blot](#)
- [Blocking Peptides](#)
- [Dot Blot](#)
- [Immunohistochemistry](#)
- [Immunofluorescence](#)
- [Immunoprecipitation](#)

#### **Anti-CDH11 / Cadherin-11 Reference Antibody (RG6125) - Images**



Anti-CDH11 / Cadherin-11 Reference Antibody (RG6125) on SDS-PAGE under reducing (R) condition. The gel was stained with Coomassie Blue. The purity of the protein is greater than 95%



The purity of Anti-CDH11 / Cadherin-11 Reference Antibody (RG6125) is more than 95%, determined by SEC-HPLC.