

**Anti-Melanotransferrin / CD228 Reference Antibody (SC-005)**  
**Recombinant Antibody**  
**Catalog # APR10337****Specification**

---

**Anti-Melanotransferrin / CD228 Reference Antibody (SC-005) - Product Information**

Application	FC, E, FTA
Primary Accession	<a href="#">P08582</a>
Reactivity	Rat, Cynomolgus, Human
Clonality	Monoclonal
Isotype	IgG1
Calculated MW	145.16 KDa

**Anti-Melanotransferrin / CD228 Reference Antibody (SC-005) - Additional Information****Target/Specificity**

Melanotransferrin / CD228

**Endotoxin**

&lt; 0.001EU/ µg,determined by LAL method.

**Conjugation**

Unconjugated

**Expression system**

CHO Cell

**Format**

Purified monoclonal antibody supplied in PBS, pH6.0, without preservative.This antibody is purified through a protein A column.

**Storage**

-80°C for 2 years under sterile conditions □ -20°C for 1 year under sterile conditions □ Avoid repeated freeze-thaw cycles.

**Anti-Melanotransferrin / CD228 Reference Antibody (SC-005) - Protein Information****Name** MELTF ([HGNC:7037](#))**Synonyms** MAP97, MFI2**Function**

Involved in iron cellular uptake. Seems to be internalized and then recycled back to the cell membrane. Binds a single atom of iron per subunit. Could also bind zinc.

**Cellular Location**

[Isoform 1]: Cell membrane; Lipid-anchor, GPI- anchor

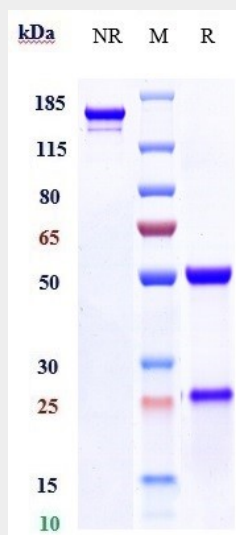
**Tissue Location**

Found predominantly in human melanomas and in certain fetal tissues; also found in liver, epithelium, umbilical chord, placenta and sweat gland ducts

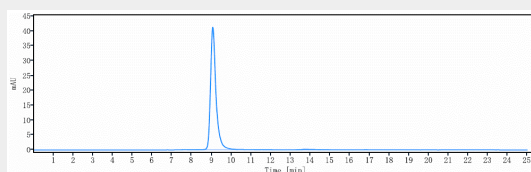
**Anti-Melanotransferrin / CD228 Reference Antibody (SC-005) - Protocols**

Provided below are standard protocols that you may find useful for product applications.

- [Western Blot](#)
- [Blocking Peptides](#)
- [Dot Blot](#)
- [Immunohistochemistry](#)
- [Immunofluorescence](#)
- [Immunoprecipitation](#)

**Anti-Melanotransferrin / CD228 Reference Antibody (SC-005) - Images**

Anti-Melanotransferrin / CD228 Reference Antibody (SC-005) on SDS-PAGE under reducing (R) condition. The gel was stained with Coomassie Blue. The purity of the protein is greater than 95%



The purity of Anti-Melanotransferrin / CD228 Reference Antibody (SC-005) is more than 99.21%, determined by SEC-HPLC.