

**Anti-P-Selectin / CD62p Reference Antibody (inclacumab)
Recombinant Antibody
Catalog # APR10349****Specification**

Anti-P-Selectin / CD62p Reference Antibody (inclacumab) - Product Information

Application	FC, Kinetics, Animal Model
Primary Accession	Q14242
Reactivity	Rat, Human
Clonality	Monoclonal
Isotype	IgG4
Calculated MW	145.42 KDa

Anti-P-Selectin / CD62p Reference Antibody (inclacumab) - Additional Information**Target/Specificity**

P-Selectin / CD62p

Endotoxin

< 0.001EU/ µg,determined by LAL method.

Conjugation

Unconjugated

Expression system

CHO Cell

Format

Purified monoclonal antibody supplied in PBS, pH6.0, without preservative.This antibody is purified through a protein A column.

Anti-P-Selectin / CD62p Reference Antibody (inclacumab) - Protein Information**Name** SELPLG**Function**

A SLe(x)-type proteoglycan, which through high affinity, calcium-dependent interactions with E-, P- and L-selectins, mediates rapid rolling of leukocytes over vascular surfaces during the initial steps in inflammation. Critical for the initial leukocyte capture.

Cellular Location

Membrane; Single-pass type I membrane protein.

Tissue Location

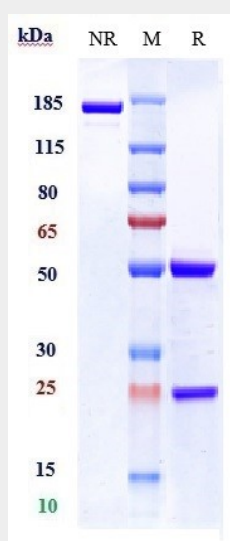
Expressed on neutrophils, monocytes and most lymphocytes

Anti-P-Selectin / CD62p Reference Antibody (inclacumab) - Protocols

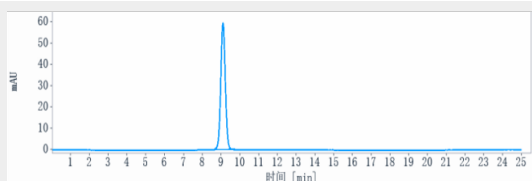
Provided below are standard protocols that you may find useful for product applications.

- [Western Blot](#)
- [Blocking Peptides](#)
- [Dot Blot](#)
- [Immunohistochemistry](#)
- [Immunofluorescence](#)
- [Immunoprecipitation](#)
- [Flow Cytometry](#)
- [Cell Culture](#)

Anti-P-Selectin / CD62p Reference Antibody (inclacumab) - Images



Anti-P-Selectin / CD62p Reference Antibody (inclacumab) on SDS-PAGE under reducing (R) condition. The gel was stained with Coomassie Blue. The purity of the protein is greater than 95%



The purity of Anti-P-Selectin / CD62p Reference Antibody (inclacumab) is more than 99.89%, determined by SEC-HPLC.