

**Anti-GFRA3 Reference Antibody (nadecnemab)
Recombinant Antibody
Catalog # APR10360****Specification**

Anti-GFRA3 Reference Antibody (nadecnemab) - Product Information

| | |
|-------------------|--------------------------|
| Application | FC, E, FTA |
| Primary Accession | O60609 |
| Reactivity | Cynomolgus, Human, Mouse |
| Clonality | Monoclonal |
| Isotype | IgG4SP |
| Calculated MW | 145 KDa |

Anti-GFRA3 Reference Antibody (nadecnemab) - Additional Information**Target/Specificity**
GFRA3**Endotoxin**
< 0.001EU/ µg,determined by LAL method.**Conjugation**
Unconjugated**Expression system**
CHO Cell**Format**
Purified monoclonal antibody supplied in PBS, pH6.0, without preservative.This antibody is purified through a protein A column.**Storage**
-80°C for 2 years under sterile conditions □ -20°C for 1 year under sterile conditions □ Avoid repeated freeze-thaw cycles.**Anti-GFRA3 Reference Antibody (nadecnemab) - Protein Information****Name** GFRA3**Function**
Receptor for the glial cell line-derived neurotrophic factor, ARTN (artemin). Mediates the artemin-induced autophosphorylation and activation of the RET receptor tyrosine kinase.**Cellular Location**
Cell membrane; Lipid-anchor, GPI-anchor.**Tissue Location**
Widely expressed in adult and fetus which exhibit a similar pattern. Essentially not expressed in

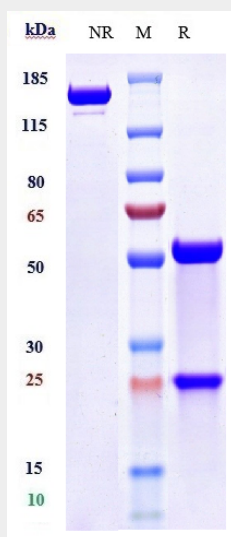
the central nervous system, but highly expressed in several sensory and sympathetic ganglia of the peripheral nervous system. Moderate expression in many non- neuronal tissues, particularly those of the digestive and urogenital systems, but high expression in stomach and appendix. Several types of glandular tissues show low expression. Very low or no expression detected in the hematopoietic system.

Anti-GFRA3 Reference Antibody (nadecnemab) - Protocols

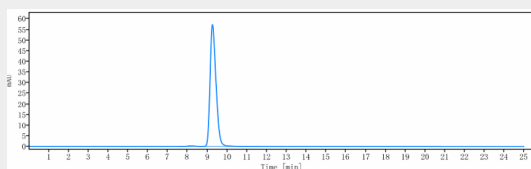
Provided below are standard protocols that you may find useful for product applications.

- [Western Blot](#)
- [Blocking Peptides](#)
- [Dot Blot](#)
- [Immunohistochemistry](#)
- [Immunofluorescence](#)
- [Immunoprecipitation](#)
- [Flow Cytometry](#)
- [Cell Culture](#)

Anti-GFRA3 Reference Antibody (nadecnemab) - Images



Anti-GFRA3 Reference Antibody (nadecnemab) on SDS-PAGE under reducing (R) condition. The gel was stained with Coomassie Blue. The purity of the protein is greater than 90%



The purity of Anti-GFRA3 Reference Antibody (nadecnemab) is more than 95%, determined by SEC-HPLC.