

**Anti-Alpha-synuclein Reference Antibody (prasinezumab)
Recombinant Antibody
Catalog # APR10375****Specification**

Anti-Alpha-synuclein Reference Antibody (prasinezumab) - Product Information

Application	FC, Kinetics, Animal Model
Primary Accession	Q9Y6H5
Reactivity	Human, Mouse
Clonality	Monoclonal
Isotype	IgG1
Calculated MW	145.26 KDa

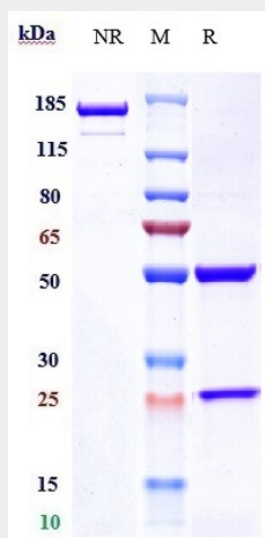
Anti-Alpha-synuclein Reference Antibody (prasinezumab) - Additional Information**Target/Specificity**
Alpha-synuclein**Endotoxin**
< 0.001EU/ µg,determined by LAL method.**Conjugation**
Unconjugated**Expression system**
CHO Cell**Format**
Purified monoclonal antibody supplied in PBS, pH6.0, without preservative.This antibody is purified through a protein A column.**Anti-Alpha-synuclein Reference Antibody (prasinezumab) - Protein Information****Name** SNCAIP**Function**
Isoform 2 inhibits the ubiquitin ligase activity of SIAH1 and inhibits proteasomal degradation of target proteins. Isoform 2 inhibits autoubiquitination and proteasomal degradation of SIAH1, and thereby increases cellular levels of SIAH. Isoform 2 modulates SNCA monoubiquitination by SIAH1.**Cellular Location**
Cytoplasm. Note=Detected in cytoplasmic inclusion bodies, together with SNCA**Tissue Location**
Detected in brain (at protein level). Widely expressed, with highest levels in brain, heart and placenta

Anti-Alpha-synuclein Reference Antibody (prasinezumab) - Protocols

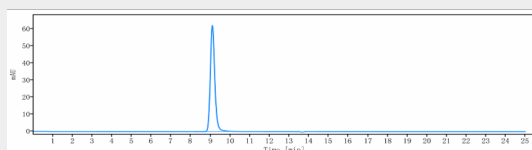
Provided below are standard protocols that you may find useful for product applications.

- [Western Blot](#)
- [Blocking Peptides](#)
- [Dot Blot](#)
- [Immunohistochemistry](#)
- [Immunofluorescence](#)
- [Immunoprecipitation](#)
- [Flow Cytometry](#)
- [Cell Culture](#)

Anti-Alpha-synuclein Reference Antibody (prasinezumab) - Images



Anti-Alpha-synuclein Reference Antibody (prasinezumab) on SDS-PAGE under reducing (R) condition. The gel was stained with Coomassie Blue. The purity of the protein is greater than 95%



The purity of Anti-Alpha-synuclein Reference Antibody (prasinezumab) is more than 100% ,determined by SEC-HPLC.