

**Anti-ACVRL1 / ALK-1 Reference Antibody (ascrinvacumab)  
Recombinant Antibody  
Catalog # APR10390****Specification**

---

**Anti-ACVRL1 / ALK-1 Reference Antibody (ascrinvacumab) - Product Information**

Application	FC, Kinetics, Animal Model
Primary Accession	<a href="#">P37023</a>
Reactivity	Human
Clonality	Monoclonal
Isotype	IgG2SA
Calculated MW	145 KDa

**Anti-ACVRL1 / ALK-1 Reference Antibody (ascrinvacumab) - Additional Information****Target/Specificity**

ACVRL1 / ALK-1

**Endotoxin**

&lt; 0.001EU/ µg,determined by LAL method.

**Conjugation**

Unconjugated

**Expression system**

CHO Cell

**Format**

Purified monoclonal antibody supplied in PBS, pH6.0, without preservative.This antibody is purified through a protein A column.

**Anti-ACVRL1 / ALK-1 Reference Antibody (ascrinvacumab) - Protein Information****Name** ACVRL1**Synonyms** ACVRLK1, ALK1**Function**

Type I receptor for TGF-beta family ligands BMP9/GDF2 and BMP10 and important regulator of normal blood vessel development. On ligand binding, forms a receptor complex consisting of two type II and two type I transmembrane serine/threonine kinases. Type II receptors phosphorylate and activate type I receptors which autophosphorylate, then bind and activate SMAD transcriptional regulators. May bind activin as well.

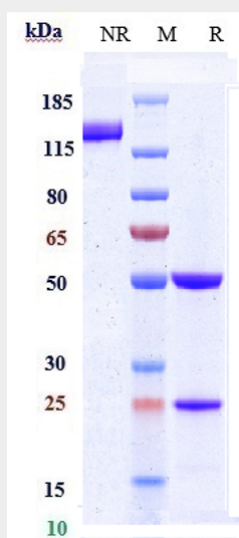
**Cellular Location**

Cell membrane; Single-pass type I membrane protein

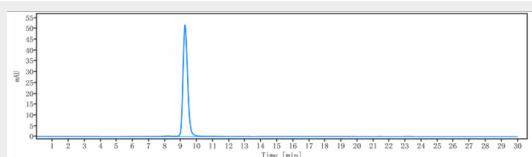
**Anti-ACVRL1 / ALK-1 Reference Antibody (ascrinvacumab) - Protocols**

Provided below are standard protocols that you may find useful for product applications.

- [Western Blot](#)
- [Blocking Peptides](#)
- [Dot Blot](#)
- [Immunohistochemistry](#)
- [Immunofluorescence](#)
- [Immunoprecipitation](#)
- [Flow Cytometry](#)
- [Cell Culture](#)

**Anti-ACVRL1 / ALK-1 Reference Antibody (ascrinvacumab) - Images**

Anti-ACVRL1 / ALK-1 Reference Antibody (ascrinvacumab) on SDS-PAGE under reducing (R) condition. The gel was stained with Coomassie Blue. The purity of the protein is greater than 90%



The purity of Anti-ACVRL1 / ALK-1 Reference Antibody (ascrinvacumab) is more than 95%, determined by SEC-HPLC.