

Anti-Siglec-15 / CD33L3 Reference Antibody (NC318)
Recombinant Antibody
Catalog # APR10421

Specification

Anti-Siglec-15 / CD33L3 Reference Antibody (NC318) - Product Information

Application	FC, Kinetics, Animal Model
Primary Accession	Q6ZMC9
Reactivity	Human, Mouse
Clonality	Monoclonal
Isotype	IgG1
Calculated MW	146.98 KDa

Anti-Siglec-15 / CD33L3 Reference Antibody (NC318) - Additional Information

Target/Specificity
Siglec-15 / CD33L3

Endotoxin
< 0.001EU/ µg,determined by LAL method.

Conjugation
Unconjugated

Expression system
CHO Cell

Format
Purified monoclonal antibody supplied in PBS, pH6.0, without preservative.This antibody is purified through a protein A column.

Anti-Siglec-15 / CD33L3 Reference Antibody (NC318) - Protein Information

Name SIGLEC15

Synonyms CD33L3

Function
Binds sialylated glycoproteins.

Cellular Location
Membrane; Single-pass type I membrane protein.

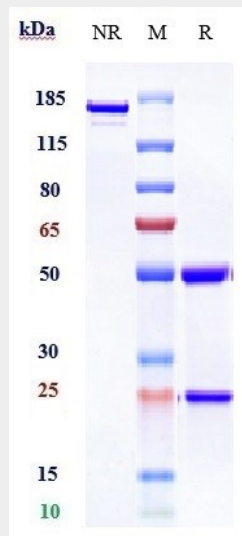
Tissue Location
Expressed in macrophage and/or dendritic cells of spleen and lymph nodes

Anti-Siglec-15 / CD33L3 Reference Antibody (NC318) - Protocols

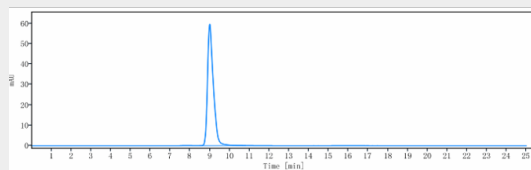
Provided below are standard protocols that you may find useful for product applications.

- [Western Blot](#)
- [Blocking Peptides](#)
- [Dot Blot](#)
- [Immunohistochemistry](#)
- [Immunofluorescence](#)
- [Immunoprecipitation](#)
- [Flow Cytometry](#)
- [Cell Culture](#)

Anti-Siglec-15 / CD33L3 Reference Antibody (NC318) - Images



Anti-Siglec-15 / CD33L3 Reference Antibody (NC318) on SDS-PAGE under reducing (R) condition. The gel was stained with Coomassie Blue. The purity of the protein is greater than 95%



The purity of Anti-Siglec-15 / CD33L3 Reference Antibody (NC318) is more than 100% ,determined by SEC-HPLC.