

**Anti-TPBG Reference Antibody (naptumomAb)
Recombinant Antibody
Catalog # APR10423****Specification**

Anti-TPBG Reference Antibody (naptumomAb) - Product Information

Application	FC, Kinetics, Animal Model
Primary Accession	Q13641
Reactivity	Human
Clonality	Monoclonal
Isotype	IgG1
Calculated MW	145 KDa

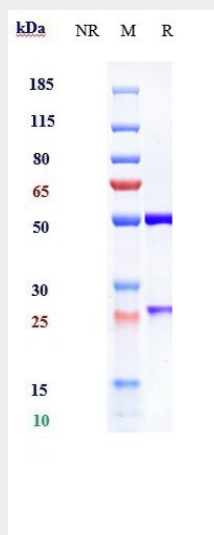
Anti-TPBG Reference Antibody (naptumomAb) - Additional Information**Target/Specificity**
TPBG**Endotoxin**
< 0.001EU/ µg,determined by LAL method.**Conjugation**
Unconjugated**Expression system**
CHO Cell**Format**
Purified monoclonal antibody supplied in PBS, pH6.0, without preservative.This antibody is purified through a protein A column.**Anti-TPBG Reference Antibody (naptumomAb) - Protein Information****Name** TPBG**Synonyms** 5T4**Function**
May function as an inhibitor of Wnt/beta-catenin signaling by indirectly interacting with LRP6 and blocking Wnt3a-dependent LRP6 internalization.**Cellular Location**
Cell membrane; Single-pass type I membrane protein**Tissue Location**
Expressed by all types of trophoblasts as early as 9 weeks of development. Specific for trophoblastic cells except for amniotic epithelium. In adult tissues, the expression is limited to a few epithelial cell types but is found on a variety of carcinoma

Anti-TPBG Reference Antibody (naptumomAb) - Protocols

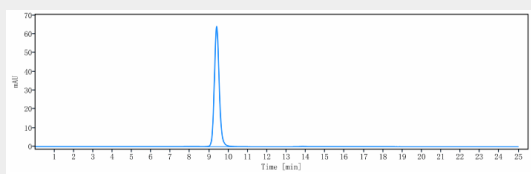
Provided below are standard protocols that you may find useful for product applications.

- [Western Blot](#)
- [Blocking Peptides](#)
- [Dot Blot](#)
- [Immunohistochemistry](#)
- [Immunofluorescence](#)
- [Immunoprecipitation](#)
- [Flow Cytometry](#)
- [Cell Culture](#)

Anti-TPBG Reference Antibody (naptumomAb) - Images



Anti-TPBG Reference Antibody (naptumomAb) on SDS-PAGE under reducing (R) condition. The gel was stained with Coomassie Blue. The purity of the protein is greater than 90%



The purity of Anti-TPBG Reference Antibody (naptumomAb) is more than 95% ,determined by SEC-HPLC.