

Anti-TrkA / NTRK1 Reference Antibody (GBR 900)
Recombinant Antibody
Catalog # APR10433**Specification**

Anti-TrkA / NTRK1 Reference Antibody (GBR 900) - Product Information

Application	FC, Kinetics, Animal Model
Primary Accession	P04629
Reactivity	Human, Mouse
Clonality	Monoclonal
Isotype	IgG1
Calculated MW	150 KDa

Anti-TrkA / NTRK1 Reference Antibody (GBR 900) - Additional Information**Target/Specificity**

TrkA / NTRK1

Endotoxin

< 0.001EU/ µg,determined by LAL method.

Conjugation

Unconjugated

Expression system

CHO Cell

Format

Purified monoclonal antibody supplied in PBS, pH6.0, without preservative. This antibody is purified through a protein A column.

Anti-TrkA / NTRK1 Reference Antibody (GBR 900) - Protein Information**Name** NTRK1**Function**

Receptor tyrosine kinase involved in the development and the maturation of the central and peripheral nervous systems through regulation of proliferation, differentiation and survival of sympathetic and nervous neurons. High affinity receptor for NGF which is its primary ligand (PubMed:1281417, PubMed:15488758, PubMed:17196528, PubMed:1849459, PubMed:1850821, PubMed:22649032, PubMed:27445338, PubMed:8325889).

Can also bind and be activated by NTF3/neurotrophin-3. However, NTF3 only supports axonal

extension through NTRK1 but has no effect on neuron survival (By similarity). Upon dimeric NGF ligand-binding, undergoes homodimerization, autophosphorylation and activation (PubMed:1281417). Recruits, phosphorylates and/or activates several downstream effectors including SHC1, FRS2, SH2B1, SH2B2 and PLCG1 that regulate distinct overlapping signaling cascades driving cell survival and differentiation. Through SHC1 and FRS2 activates a GRB2-Ras-MAPK cascade that regulates cell differentiation and survival. Through PLCG1 controls NF-Kappa-B activation and the transcription of genes involved in cell survival. Through SHC1 and SH2B1 controls a Ras-PI3 kinase-AKT1 signaling cascade that is also regulating survival. In absence of ligand and activation, may promote cell death, making the survival of neurons dependent on trophic factors.

Cellular Location

Cell membrane; Single-pass type I membrane protein. Early endosome membrane {ECO:0000250|UniProtKB:P35739}; Single-pass type I membrane protein {ECO:0000250|UniProtKB:P35739}. Late endosome membrane {ECO:0000250|UniProtKB:P35739}; Single-pass type I membrane protein {ECO:0000250|UniProtKB:P35739}. Recycling endosome membrane {ECO:0000250|UniProtKB:P35739}; Single-pass type I membrane protein {ECO:0000250|UniProtKB:P35739}. Note=Rapidly internalized after NGF binding (PubMed:1281417). Internalized to endosomes upon binding of NGF or NTF3 and further transported to the cell body via a retrograde axonal transport. Localized at cell membrane and early endosomes before nerve growth factor (NGF) stimulation. Recruited to late endosomes after NGF stimulation. Colocalized with RAPGEF2 at late endosomes {ECO:0000250|UniProtKB:P35739, ECO:0000269|PubMed:1281417}

Tissue Location

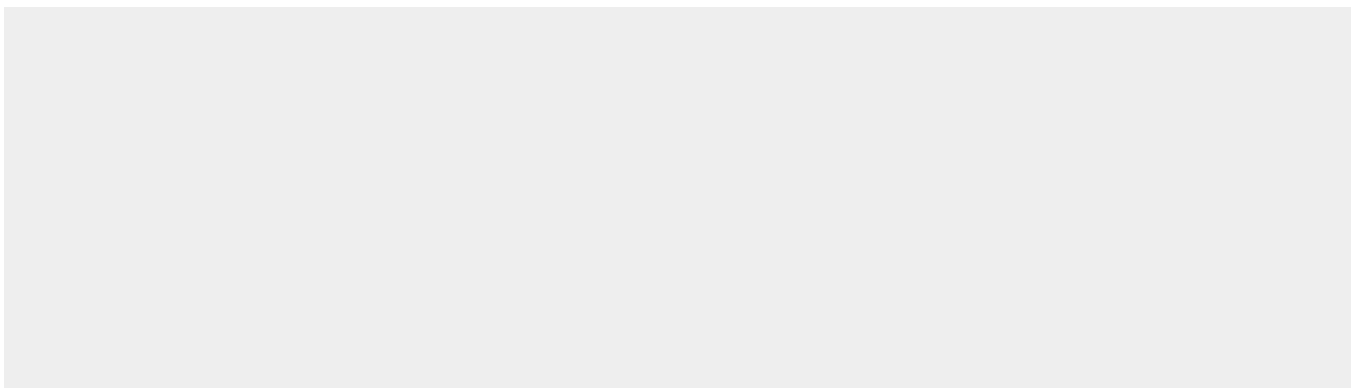
Isoform TrkA-I is found in most non-neuronal tissues. Isoform TrkA-II is primarily expressed in neuronal cells TrkA-III is specifically expressed by pluripotent neural stem and neural crest progenitors.

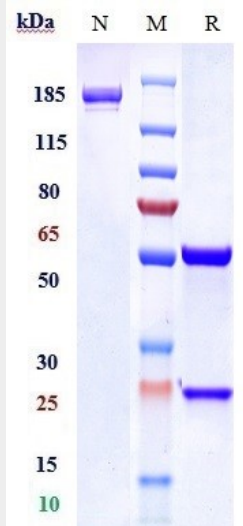
Anti-TrkA / NTRK1 Reference Antibody (GBR 900) - Protocols

Provided below are standard protocols that you may find useful for product applications.

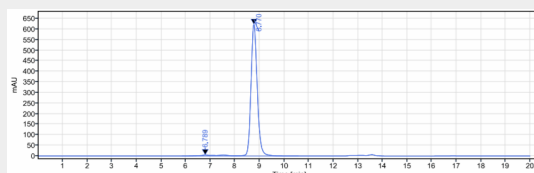
- [Western Blot](#)
- [Blocking Peptides](#)
- [Dot Blot](#)
- [Immunohistochemistry](#)
- [Immunofluorescence](#)
- [Immunoprecipitation](#)
- [Flow Cytometry](#)
- [Cell Culture](#)

Anti-TrkA / NTRK1 Reference Antibody (GBR 900) - Images





Anti-TrkA / NTRK1 Reference Antibody (GBR 900) on SDS-PAGE under reducing (R) condition. The gel was stained with Coomassie Blue. The purity of the protein is greater than 95%



The purity of Anti-TrkA / NTRK1 Reference Antibody (GBR 900) is more than 97.29% ,determined by SEC-HPLC.