

**Anti-TBFB2 Reference Antibody (LY3022859)**  
**Recombinant Antibody**  
**Catalog # APR10457****Specification**

---

**Anti-TBFB2 Reference Antibody (LY3022859) - Product Information**

Application	FC, Kinetics, Animal Model
Primary Accession	<a href="#">P37173</a>
Reactivity	Human
Clonality	Monoclonal
Isotype	IgG1
Calculated MW	143 KDa

**Anti-TBFB2 Reference Antibody (LY3022859) - Additional Information****Target/Specificity**  
TBFB2**Endotoxin**  
< 0.001EU/ µg,determined by LAL method.**Conjugation**  
Unconjugated**Expression system**  
CHO Cell**Format**  
Purified monoclonal antibody supplied in PBS, pH6.0, without preservative.This antibody is purified through a protein A column.**Anti-TBFB2 Reference Antibody (LY3022859) - Protein Information****Name** TGFB2**Function**  
Transmembrane serine/threonine kinase forming with the TGF- beta type I serine/threonine kinase receptor, TGFB1, the non- promiscuous receptor for the TGF-beta cytokines TGFB1, TGFB2 and TGFB3. Transduces the TGFB1, TGFB2 and TGFB3 signal from the cell surface to the cytoplasm and thus regulates a plethora of physiological and pathological processes including cell cycle arrest in epithelial and hematopoietic cells, control of mesenchymal cell proliferation and differentiation, wound healing, extracellular matrix production, immunosuppression and carcinogenesis. The formation of the receptor complex composed of 2 TGFB1 and 2 TGFB2 molecules symmetrically bound to the cytokine dimer results in the phosphorylation and activation of TGFB1 by the constitutively active TGFB2. Activated TGFB1 phosphorylates SMAD2 which dissociates from the receptor and interacts with SMAD4. The SMAD2-SMAD4 complex is subsequently translocated to the nucleus where it modulates the transcription of the TGF-beta-regulated genes. This constitutes the canonical SMAD-dependent TGF-beta signaling cascade. Also involved in non-canonical,

SMAD-independent TGF-beta signaling pathways.

#### Cellular Location

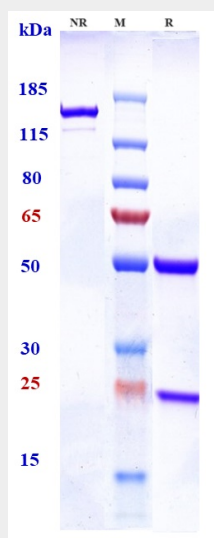
Cell membrane; Single-pass type I membrane protein. Membrane raft

### Anti-TBFB2 Reference Antibody (LY3022859) - Protocols

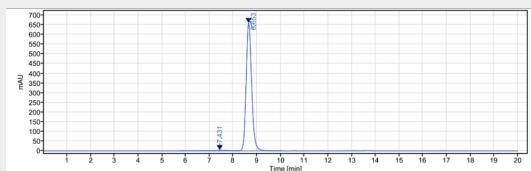
Provided below are standard protocols that you may find useful for product applications.

- [Western Blot](#)
- [Blocking Peptides](#)
- [Dot Blot](#)
- [Immunohistochemistry](#)
- [Immunofluorescence](#)
- [Immunoprecipitation](#)
- [Flow Cytometry](#)
- [Cell Culture](#)

### Anti-TBFB2 Reference Antibody (LY3022859) - Images



Anti-TBFB2 Reference Antibody (LY3022859) on SDS-PAGE under reducing (R) condition. The gel was stained with Coomassie Blue. The purity of the protein is greater than 95%



The purity of Anti-TBFB2 Reference Antibody (LY3022859) is more than 98.25%, determined by SEC-HPLC.