

**Anti-TNFSF13B / BAFF / CD257 Reference Antibody (tabalumab)
Recombinant Antibody
Catalog # APR10464****Specification**

Anti-TNFSF13B / BAFF / CD257 Reference Antibody (tabalumab) - Product Information

Application	FC, Kinetics, Animal Model
Primary Accession	Q9Y275
Reactivity	Human, Mouse
Clonality	Monoclonal
Isotype	IgG4SP
Calculated MW	145 KDa

Anti-TNFSF13B / BAFF / CD257 Reference Antibody (tabalumab) - Additional Information**Target/Specificity**

TNFSF13B / BAFF / CD257

Endotoxin

< 0.001EU/ µg,determined by LAL method.

Conjugation

Unconjugated

Expression system

CHO Cell

Format

Purified monoclonal antibody supplied in PBS, pH6.0, without preservative.This antibody is purified through a protein A column.

Anti-TNFSF13B / BAFF / CD257 Reference Antibody (tabalumab) - Protein Information**Name** TNFSF13B**Synonyms** BAFF, BLYS, TALL1, TNFSF20, ZTNF4**Function**

Cytokine that binds to TNFRSF13B/TACI and TNFRSF17/BCMA. TNFSF13/APRIL binds to the same 2 receptors. Together, they form a 2 ligands -2 receptors pathway involved in the stimulation of B- and T- cell function and the regulation of humoral immunity. A third B-cell specific BAFF-receptor (BAFFR/BR3) promotes the survival of mature B- cells and the B-cell response.

Cellular Location

Cell membrane; Single-pass type II membrane protein

Tissue Location

Abundantly expressed in peripheral blood Leukocytes and is specifically expressed in monocytes

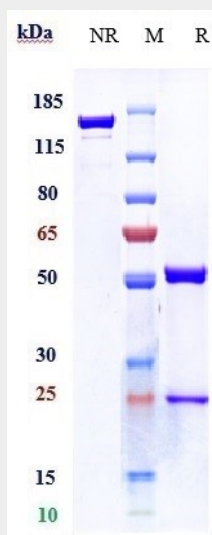
and macrophages. Also found in the spleen, lymph node, bone marrow, T-cells and dendritic cells. A lower expression seen in placenta, heart, lung, fetal liver, thymus, and pancreas. Isoform 2 is expressed in many myeloid cell lines

Anti-TNFSF13B / BAFF / CD257 Reference Antibody (tabalumab) - Protocols

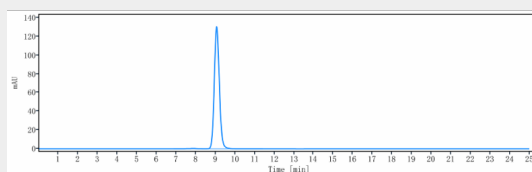
Provided below are standard protocols that you may find useful for product applications.

- [Western Blot](#)
- [Blocking Peptides](#)
- [Dot Blot](#)
- [Immunohistochemistry](#)
- [Immunofluorescence](#)
- [Immunoprecipitation](#)

Anti-TNFSF13B / BAFF / CD257 Reference Antibody (tabalumab) - Images



Anti-TNFSF13B / BAFF / CD257 Reference Antibody (tabalumab) on SDS-PAGE under reducing (R) condition. The gel was stained with Coomassie Blue. The purity of the protein is greater than 90%



The purity of Anti-TNFSF13B / BAFF / CD257 Reference Antibody (tabalumab) is more than 95%, determined by SEC-HPLC.