

Anti-S100A4 Reference Antibody (LK-1)
Recombinant Antibody
Catalog # APR10469**Specification**

Anti-S100A4 Reference Antibody (LK-1) - Product Information

Application	FC, E, FTA
Primary Accession	P26447
Reactivity	Human, Mouse
Clonality	Monoclonal
Isotype	IgG1
Calculated MW	150 KDa

Anti-S100A4 Reference Antibody (LK-1) - Additional Information**Target/Specificity**
S100A4**Endotoxin**
< 0.001EU/ µg,determined by LAL method.**Conjugation**
Unconjugated**Expression system**
CHO Cell**Format**
Purified monoclonal antibody supplied in PBS, pH6.0, without preservative.This antibody is purified through a protein A column.**Storage**
-80°C for 2 years under sterile conditions □ -20°C for 1 year under sterile conditions □ Avoid repeated freeze-thaw cycles.**Anti-S100A4 Reference Antibody (LK-1) - Protein Information****Name** S100A4**Synonyms** CAPL, MTS1**Function**
Calcium-binding protein that plays a role in various cellular processes including motility, angiogenesis, cell differentiation, apoptosis, and autophagy (PubMed:16707441, PubMed:23752197, PubMed:30713770). Increases cell motility and invasiveness by interacting with non-muscle myosin heavy chain (NMMHC)

IIA/MYH9 (PubMed:16707441). Mechanistically, promotes filament depolymerization and increases the amount of soluble myosin-IIA, resulting in the formation of stable protrusions facilitating chemotaxis (By similarity). Modulates also the pro-apoptotic function of TP53 by binding to its C-terminal transactivation domain within the nucleus and reducing its protein levels (PubMed:23752197). Within the extracellular space, stimulates cytokine production including granulocyte colony-stimulating factor and CCL24 from T-lymphocytes (By similarity). In addition, stimulates T-lymphocyte chemotaxis by acting as a chemoattractant complex with PGLYRP1 that promotes lymphocyte migration via CCR5 and CXCR3 receptors (PubMed:30713770, PubMed:26654597).

Cellular Location

Secreted. Nucleus Cytoplasm {ECO:0000250|UniProtKB:P07091}

Tissue Location

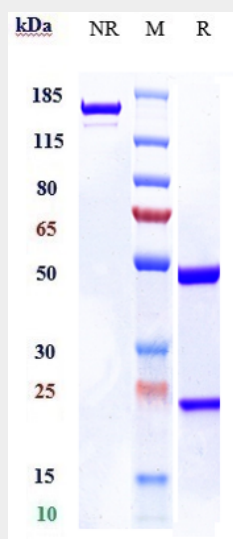
Ubiquitously expressed.

Anti-S100A4 Reference Antibody (LK-1) - Protocols

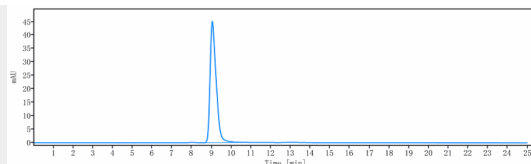
Provided below are standard protocols that you may find useful for product applications.

- [Western Blot](#)
- [Blocking Peptides](#)
- [Dot Blot](#)
- [Immunohistochemistry](#)
- [Immunofluorescence](#)
- [Immunoprecipitation](#)
- [Flow Cytometry](#)
- [Cell Culture](#)

Anti-S100A4 Reference Antibody (LK-1) - Images



Anti-S100A4 Reference Antibody (LK-1) on SDS-PAGE under reducing (R) condition. The gel was stained with Coomassie Blue. The purity of the protein is greater than 90%



The purity of Anti-S100A4 Reference Antibody (LK-1) is more than 95% ,determined by SEC-HPLC.