

**Anti-Complement C5 Reference Antibody (tesidolumab)
Recombinant Antibody
Catalog # APR10472****Specification**

Anti-Complement C5 Reference Antibody (tesidolumab) - Product Information

Application	FC, Kinetics, Animal Model
Primary Accession	P01031
Reactivity	Human, Mouse
Clonality	Monoclonal
Isotype	IgG1
Calculated MW	145 KDa

Anti-Complement C5 Reference Antibody (tesidolumab) - Additional Information**Target/Specificity**
Complement C5**Endotoxin**
< 0.001EU/ µg,determined by LAL method.**Conjugation**
Unconjugated**Expression system**
CHO Cell**Format**
Purified monoclonal antibody supplied in PBS, pH6.0, without preservative.This antibody is purified through a protein A column.**Anti-Complement C5 Reference Antibody (tesidolumab) - Protein Information****Name** C5 {ECO:0000303|PubMed:1984448, ECO:0000312|HGNC:HGNC:1331}**Function**
Precursor of the C5a anaphylatoxin and complement C5b components of the complement pathways, which consist in a cascade of proteins that leads to phagocytosis and breakdown of pathogens and signaling that strengthens the adaptive immune system (PubMed:12878586, PubMed:18204047, PubMed:30643019, PubMed:6554279). Activated downstream of classical, alternative, lectin and GZMK complement pathways (PubMed:12878586, PubMed:18204047, PubMed:30643019, PubMed:6554279).

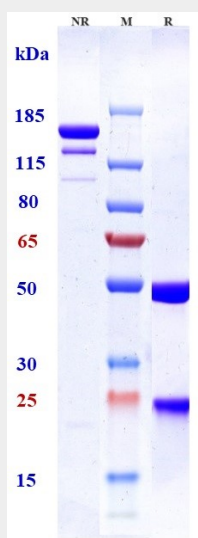
Cellular Location

Secreted. [C5a anaphylatoxin]: Secreted

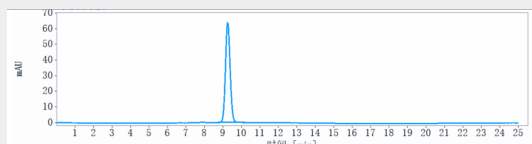
Anti-Complement C5 Reference Antibody (tesidolumab) - Protocols

Provided below are standard protocols that you may find useful for product applications.

- [Western Blot](#)
- [Blocking Peptides](#)
- [Dot Blot](#)
- [Immunohistochemistry](#)
- [Immunofluorescence](#)
- [Immunoprecipitation](#)
- [Flow Cytometry](#)
- [Cell Culture](#)

Anti-Complement C5 Reference Antibody (tesidolumab) - Images

Anti-Complement C5 Reference Antibody (tesidolumab) on SDS-PAGE under reducing (R) condition. The gel was stained with Coomassie Blue. The purity of the protein is greater than 90%



The purity of Anti-Complement C5 Reference Antibody (tesidolumab) is more than 95%, determined by SEC-HPLC.