

**Anti-CD11 Reference Antibody (Rovelizumab)  
Recombinant Antibody  
Catalog # APR10475****Specification**

---

**Anti-CD11 Reference Antibody (Rovelizumab) - Product Information**

Application	FC, E, FTA
Primary Accession	<a href="#">O9UQ88</a>
Reactivity	Human
Clonality	Monoclonal
Isotype	IgG4
Calculated MW	145.98 KDa

**Anti-CD11 Reference Antibody (Rovelizumab) - Additional Information****Target/Specificity**  
CD11**Endotoxin**  
< 0.001EU/ µg,determined by LAL method.**Conjugation**  
Unconjugated**Expression system**  
CHO Cell**Format**  
Purified monoclonal antibody supplied in PBS, pH6.0, without preservative.This antibody is purified through a protein A column.**Anti-CD11 Reference Antibody (Rovelizumab) - Protein Information****Name** CDK11A**Synonyms** CDC2L2, CDC2L3, PITSLREB**Function**  
Appears to play multiple roles in cell cycle progression, cytokinesis and apoptosis. The p110 isoforms have been suggested to be involved in pre-mRNA splicing, potentially by phosphorylating the splicing protein SFRS7. The p58 isoform may act as a negative regulator of normal cell cycle progression.**Cellular Location**  
Cytoplasm. Nucleus.**Tissue Location**  
Expressed ubiquitously. Some evidence of isoform- specific tissue distribution.

## Anti-CD11 Reference Antibody (Rovelizumab) - Protocols

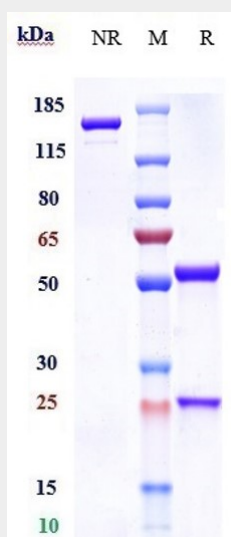
Provided below are standard protocols that you may find useful for product applications.

- [Western Blot](#)
- [Blocking Peptides](#)
- [Dot Blot](#)
- [Immunohistochemistry](#)
- [Immunofluorescence](#)
- [Immunoprecipitation](#)

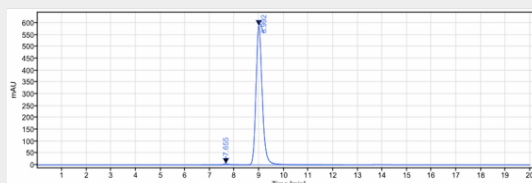
- [Flow Cytometry](#)

- [Cell Culture](#)

## Anti-CD11 Reference Antibody (Rovelizumab) - Images



Anti-CD11 Reference Antibody (Rovelizumab) on SDS-PAGE under reducing (R) condition. The gel was stained with Coomassie Blue. The purity of the protein is greater than 95%



The purity of Anti-CD11 Reference Antibody (Rovelizumab) is more than 99.22% ,determined by SEC-HPLC.