

**Anti-Fibronectin Reference Antibody (radretumab)
Recombinant Antibody
Catalog # APR10479****Specification****Anti-Fibronectin Reference Antibody (radretumab) - Product Information**

Application	FC, Kinetics, Animal Model
Primary Accession	P02751
Reactivity	Human, Mouse
Clonality	Monoclonal
Isotype	IgG1
Calculated MW	144.2 KDa

Anti-Fibronectin Reference Antibody (radretumab) - Additional Information**Target/Specificity**
Fibronectin**Endotoxin**
< 0.001EU/ µg,determined by LAL method.**Conjugation**
Unconjugated**Expression system**
CHO Cell**Format**
Purified monoclonal antibody supplied in PBS, pH6.0, without preservative.This antibody is purified through a protein A column.**Anti-Fibronectin Reference Antibody (radretumab) - Protein Information****Name** FN1 ([HGNC:3778](#))**Synonyms** FN**Function**
Fibronectins bind cell surfaces and various compounds including collagen, fibrin, heparin, DNA, and actin (PubMed:3024962, PubMed:3593230, PubMed:3900070, PubMed:7989369). Fibronectins are involved in cell adhesion, cell motility, opsonization, wound healing, and maintenance of cell shape (PubMed:3024962, PubMed:3593230, PubMed:3900070, PubMed:7989369).

href="http://www.uniprot.org/citations/7989369" target="_blank">7989369). Involved in osteoblast compaction through the fibronectin fibrillogenesis cell-mediated matrix assembly process, essential for osteoblast mineralization (By similarity). Participates in the regulation of type I collagen deposition by osteoblasts (By similarity). Acts as a ligand for the LILRB4 receptor, inhibiting FCGR1A/CD64-mediated monocyte activation (PubMed:34089617).

Cellular Location

Secreted, extracellular space, extracellular matrix. Secreted {ECO:0000250|UniProtKB:P11276}

Tissue Location

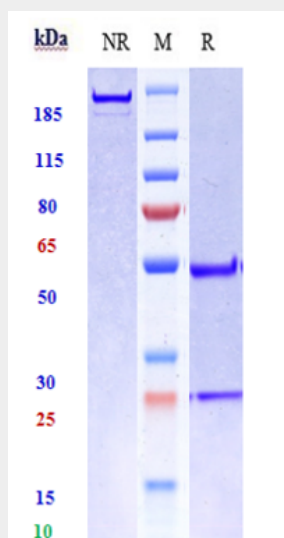
Expressed in the inner limiting membrane and around blood vessels in the retina (at protein level) (PubMed:29777959) Plasma FN (soluble dimeric form) is secreted by hepatocytes. Cellular FN (dimeric or cross-linked multimeric forms), made by fibroblasts, epithelial and other cell types, is deposited as fibrils in the extracellular matrix. Ugl-Y1, Ugl-Y2 and Ugl-Y3 are found in urine (PubMed:17614963).

Anti-Fibronectin Reference Antibody (radretumab) - Protocols

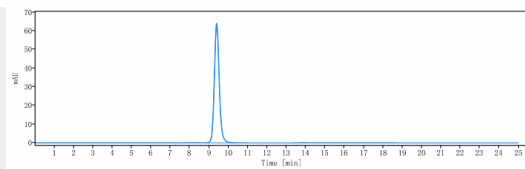
Provided below are standard protocols that you may find useful for product applications.

- [Western Blot](#)
- [Blocking Peptides](#)
- [Dot Blot](#)
- [Immunohistochemistry](#)
- [Immunofluorescence](#)
- [Immunoprecipitation](#)
- [Flow Cytometry](#)
- [Cell Culture](#)

Anti-Fibronectin Reference Antibody (radretumab) - Images



Anti-Fibronectin Reference Antibody (radretumab) on SDS-PAGE under reducing (R) condition. The gel was stained with Coomassie Blue. The purity of the protein is greater than 95%



The purity of Anti-Fibronectin Reference Antibody (radretumab) is more than 95% ,determined by SEC-HPLC.