

**Anti-ICOS / CD278 Reference Antibody (alomfilimab)
Recombinant Antibody
Catalog # APR10481****Specification**

Anti-ICOS / CD278 Reference Antibody (alomfilimab) - Product Information

Application	FC, Kinetics, Animal Model
Primary Accession	Q9Y6W8
Reactivity	Human, Mouse
Clonality	Monoclonal
Isotype	IgG1
Calculated MW	146.5 KDa

Anti-ICOS / CD278 Reference Antibody (alomfilimab) - Additional Information**Target/Specificity**
ICOS / CD278**Endotoxin**
< 0.001EU/ µg,determined by LAL method.**Conjugation**
Unconjugated**Expression system**
CHO Cell**Format**
Purified monoclonal antibody supplied in PBS, pH6.0, without preservative.This antibody is purified through a protein A column.**Anti-ICOS / CD278 Reference Antibody (alomfilimab) - Protein Information****Name** ICOS**Synonyms** AILIM**Function**
Stimulatory receptor expressed in activated or antigen- experienced T-cells that plays an important role in the immune response (PubMed:9930702). Upon binding to its ligand ICOSL expressed on antigen presenting cells (APCs), delivers costimulatory signals that enhances all basic T-cell responses to a foreign antigen, namely proliferation, secretion of lymphokines including IL10, up-regulation of molecules that mediate cell-cell interaction, and effective help for antibody secretion by B-cells (PubMed:33033255). Also acts as a costimulatory receptor critical for the differentiation of T follicular regulatory cells upon immune challenges such as viral infection (PubMed:27135603).

target="_blank">27135603). Mechanistically, potentiates TCR-induced calcium flux by augmenting PLCG1 activation and actin remodeling (By similarity). In addition, activates PI3K signaling pathways independently of calcium flux (PubMed:30523347). Essential both for efficient interaction between T and B-cells and for normal antibody responses to T-cell dependent antigens. Prevents the apoptosis of pre-activated T-cells. Plays a critical role in CD40-mediated class switching of immunoglobulin isotypes (By similarity).

Cellular Location

[Isoform 1]: Cell membrane; Single-pass type I membrane protein

Tissue Location

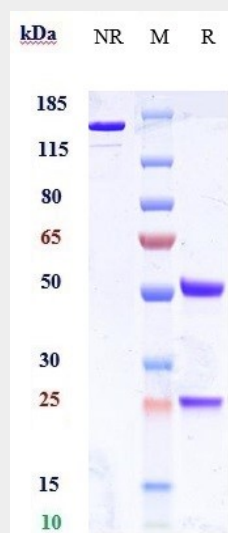
Activated T-cells. Highly expressed on tonsillar T- cells, which are closely associated with B-cells in the apical light zone of germinal centers, the site of terminal B-cell maturation Expressed at lower levels in thymus, lung, lymph node and peripheral blood leukocytes. Expressed in the medulla of fetal and newborn thymus

Anti-ICOS / CD278 Reference Antibody (alomfilimab) - Protocols

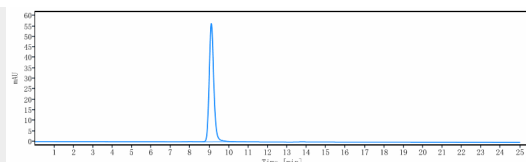
Provided below are standard protocols that you may find useful for product applications.

- [Western Blot](#)
- [Blocking Peptides](#)
- [Dot Blot](#)
- [Immunohistochemistry](#)
- [Immunofluorescence](#)
- [Immunoprecipitation](#)
- [Flow Cytometry](#)
- [Cell Culture](#)

Anti-ICOS / CD278 Reference Antibody (alomfilimab) - Images



Anti-ICOS / CD278 Reference Antibody (alomfilimab) on SDS-PAGE under reducing (R) condition. The gel was stained with Coomassie Blue. The purity of the protein is greater than 95%



The purity of Anti-ICOS / CD278 Reference Antibody (alomfilimab) is more than 95% ,determined by SEC-HPLC.