

**Anti-HBEGF Reference Antibody (KHK2866)**  
**Recombinant Antibody**  
**Catalog # APR10487****Specification**

---

**Anti-HBEGF Reference Antibody (KHK2866) - Product Information**

Application	FC, Kinetics, Animal Model
Primary Accession	<a href="#">Q99075</a>
Reactivity	Human
Clonality	Monoclonal
Isotype	IgG
Calculated MW	145 KDa

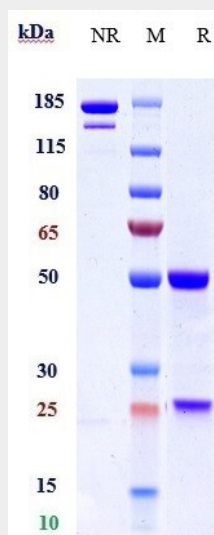
**Anti-HBEGF Reference Antibody (KHK2866) - Additional Information****Target/Specificity**  
HBEGF**Endotoxin**  
< 0.001EU/ µg,determined by LAL method.**Conjugation**  
Unconjugated**Expression system**  
CHO Cell**Format**  
Purified monoclonal antibody supplied in PBS, pH6.0, without preservative.This antibody is purified through a protein A column.**Anti-HBEGF Reference Antibody (KHK2866) - Protein Information****Name** HBEGF**Synonyms** DTR, DTS, HEGFL**Function**  
Growth factor that mediates its effects via EGFR, ERBB2 and ERBB4. Required for normal cardiac valve formation and normal heart function. Promotes smooth muscle cell proliferation. May be involved in macrophage-mediated cellular proliferation. It is mitogenic for fibroblasts, but not endothelial cells. It is able to bind EGF receptor/EGFR with higher affinity than EGF itself and is a far more potent mitogen for smooth muscle cells than EGF. Also acts as a diphtheria toxin receptor.**Cellular Location**  
[Heparin-binding EGF-like growth factor]: Secreted, extracellular space. Note=Mature HB-EGF is released into the extracellular space and probably binds to a receptor

## Anti-HBEGF Reference Antibody (KHK2866) - Protocols

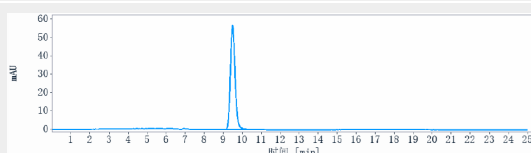
Provided below are standard protocols that you may find useful for product applications.

- [Western Blot](#)
- [Blocking Peptides](#)
- [Dot Blot](#)
- [Immunohistochemistry](#)
- [Immunofluorescence](#)
- [Immunoprecipitation](#)

## Anti-HBEGF Reference Antibody (KHK2866) - Images



Anti-HBEGF Reference Antibody (KHK2866) on SDS-PAGE under reducing (R) condition. The gel was stained with Coomassie Blue. The purity of the protein is greater than 90%



The purity of Anti-HBEGF Reference Antibody (KHK2866) is more than 95% ,determined by SEC-HPLC.