

**Anti-Hepcidin / HAMP Reference Antibody (LY2787106)**  
**Recombinant Antibody**  
**Catalog # APR10494****Specification**

---

**Anti-Hepcidin / HAMP Reference Antibody (LY2787106) - Product Information**

Application	FC, Kinetics, Animal Model
Primary Accession	<a href="#">P81172</a>
Reactivity	Human
Clonality	Monoclonal
Isotype	IgG4SP
Calculated MW	144.2 KDa

**Anti-Hepcidin / HAMP Reference Antibody (LY2787106) - Additional Information****Target/Specificity**  
Hepcidin / HAMP**Endotoxin**  
< 0.001EU/ µg,determined by LAL method.**Conjugation**  
Unconjugated**Expression system**  
CHO Cell**Format**  
Purified monoclonal antibody supplied in PBS, pH6.0, without preservative.This antibody is purified through a protein A column.**Anti-Hepcidin / HAMP Reference Antibody (LY2787106) - Protein Information****Name** HAMP ([HGNC:15598](#))**Synonyms** HEPC, LEAP1**Function**  
Liver-produced hormone that constitutes the main circulating regulator of iron absorption and distribution across tissues. Acts by promoting endocytosis and degradation of ferroportin/SLC40A1, leading to the retention of iron in iron-exporting cells and decreased flow of iron into plasma (PubMed:<a href="http://www.uniprot.org/citations/22682227" target="\_blank">22682227</a>, PubMed:<a href="http://www.uniprot.org/citations/29237594" target="\_blank">29237594</a>, PubMed:<a href="http://www.uniprot.org/citations/32814342" target="\_blank">32814342</a>). Controls the major flows of iron into plasma: absorption of dietary iron in the intestine, recycling of iron by macrophages, which phagocytose old erythrocytes and other cells, and mobilization of stored iron from hepatocytes (PubMed:<a href="http://www.uniprot.org/citations/22306005" target="\_blank">22306005</a>).

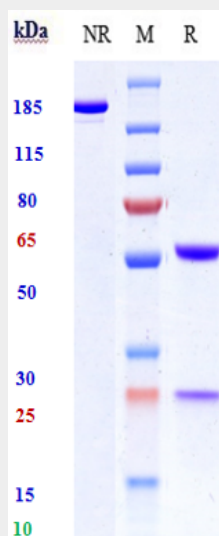
**Cellular Location**  
Secreted.**Tissue Location**

Highest expression in liver and to a lesser extent in heart and brain. Low levels in lung, tonsils, salivary gland, trachea, prostate gland, adrenal gland and thyroid gland. Secreted into the urine and blood (PubMed:11034317). Expressed by hepatocytes (PubMed:15124018).

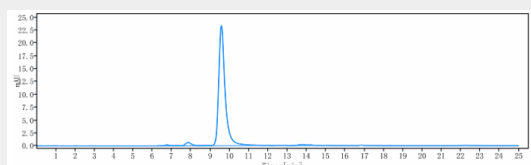
**Anti-Hepcidin / HAMP Reference Antibody (LY2787106) - Protocols**

Provided below are standard protocols that you may find useful for product applications.

- [Western Blot](#)
- [Blocking Peptides](#)
- [Dot Blot](#)
- [Immunohistochemistry](#)
- [Immunofluorescence](#)
- [Immunoprecipitation](#)
- [Flow Cytometry](#)
- [Cell Culture](#)

**Anti-Hepcidin / HAMP Reference Antibody (LY2787106) - Images**

Anti-Hepcidin / HAMP Reference Antibody (LY2787106) on SDS-PAGE under reducing (R) condition. The gel was stained with Coomassie Blue. The purity of the protein is greater than 95%



The purity of Anti-Hepcidin / HAMP Reference Antibody (LY2787106) is more than 95%, determined by SEC-HPLC.