

**Anti-TSPAN26 / CD37 Reference Antibody (otlertuzumab)  
Recombinant Antibody  
Catalog # APR10499****Specification**

---

**Anti-TSPAN26 / CD37 Reference Antibody (otlertuzumab) - Product Information**

Application	FC, Kinetics, Animal Model
Primary Accession	<a href="#">P11049</a>
Reactivity	Human
Clonality	Monoclonal
Isotype	IgG1
Calculated MW	104.82 KDa

**Anti-TSPAN26 / CD37 Reference Antibody (otlertuzumab) - Additional Information****Target/Specificity**  
TSPAN26 / CD37**Endotoxin**  
< 0.001EU/ µg, determined by LAL method.**Conjugation**  
Unconjugated**Expression system**  
CHO Cell**Format**  
Purified monoclonal antibody supplied in PBS, pH6.0, without preservative. This antibody is purified through a protein A column.**Anti-TSPAN26 / CD37 Reference Antibody (otlertuzumab) - Protein Information****Name** CD37**Synonyms** TSPAN26**Function**  
Structural component of specialized membrane microdomains known as tetraspanin-enriched microdomains (TERMs), which act as platforms for receptor clustering and signaling. Participates thereby in diverse biological functions such as cell signal transduction, adhesion, migration and protein trafficking (PubMed: <http://www.uniprot.org/citations/22624718> target="\_blank">22624718</a>). Upon ligand binding, two signaling pathways are activated, one acting through phosphorylation by LYN leading to cell death or a survival pathway with activation of GSK3B (PubMed: <http://www.uniprot.org/citations/22624718> target="\_blank">22624718</a>). Plays an essential role essential for clustering of integrin ITGA4/ITGB1 and promotes its mobility in the plasma membrane of B-cells. In turn, participates in ITGA4/ITGB1 integrin-mediated antiapoptotic signaling through AKT (By similarity). Also plays a

role in the migration of dendritic cells and neutrophils to draining lymph nodes, as well as in their integrin-mediated adhesion (By similarity). Negatively regulates IL-6 responses through direct interaction with SOCS3 thereby preventing constitutive IL-6 signaling (PubMed:<a href="http://www.uniprot.org/citations/26784544" target="\_blank">26784544</a>). Alternatively, inhibition of IL-6 signaling can also occur via interaction and stabilization of DECTIN1/CLEC7A at the cell membrane to inhibit its ability to promote the production of IL-6 (PubMed:<a href="http://www.uniprot.org/citations/17182550" target="\_blank">17182550</a>).

#### Cellular Location

Cell membrane; Multi-pass membrane protein

#### Tissue Location

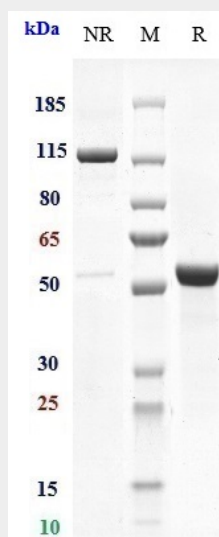
B-lymphocytes (PubMed:26784544). Antigen presenting cells (PubMed:17182550).

### Anti-TSPAN26 / CD37 Reference Antibody (otlertuzumab) - Protocols

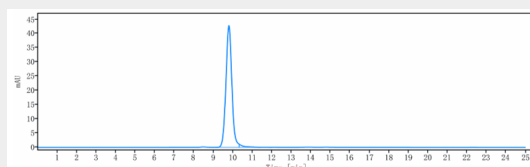
Provided below are standard protocols that you may find useful for product applications.

- [Western Blot](#)
- [Blocking Peptides](#)
- [Dot Blot](#)
- [Immunohistochemistry](#)
- [Immunofluorescence](#)
- [Immunoprecipitation](#)
- [Flow Cytometry](#)
- [Cell Culture](#)

### Anti-TSPAN26 / CD37 Reference Antibody (otlertuzumab) - Images



Anti-TSPAN26 / CD37 Reference Antibody (otlertuzumab) on SDS-PAGE under reducing (R) condition. The gel was stained with Coomassie Blue. The purity of the protein is greater than 95%



The purity of Anti-TSPAN26 / CD37 Reference Antibody (otlertuzumab) is more than 95% ,determined by SEC-HPLC.