

**Anti-EphA3 Reference Antibody (ifabotuzumab)  
Recombinant Antibody  
Catalog # APR10514****Specification**

---

**Anti-EphA3 Reference Antibody (ifabotuzumab) - Product Information**

Application	FC, Kinetics, Animal Model
Primary Accession	<a href="#">P29320</a>
Reactivity	Human, Mouse
Clonality	Monoclonal
Isotype	IgG1
Calculated MW	145.4 KDa

**Anti-EphA3 Reference Antibody (ifabotuzumab) - Additional Information****Target/Specificity**  
EphA3**Endotoxin**  
< 0.001EU/ µg,determined by LAL method.**Conjugation**  
Unconjugated**Expression system**  
CHO Cell**Format**  
Purified monoclonal antibody supplied in PBS, pH6.0, without preservative.This antibody is purified through a protein A column.**Anti-EphA3 Reference Antibody (ifabotuzumab) - Protein Information****Name** EPHA3**Synonyms** ETK, ETK1, HEK, TYRO4**Function**  
Receptor tyrosine kinase which binds promiscuously membrane- bound ephrin family ligands residing on adjacent cells, leading to contact-dependent bidirectional signaling into neighboring cells. The signaling pathway downstream of the receptor is referred to as forward signaling while the signaling pathway downstream of the ephrin ligand is referred to as reverse signaling. Highly promiscuous for ephrin-A ligands it binds preferentially EFNA5. Upon activation by EFNA5 regulates cell-cell adhesion, cytoskeletal organization and cell migration. Plays a role in cardiac cells migration and differentiation and regulates the formation of the atrioventricular canal and septum during development probably through activation by EFNA1. Involved in the retinotectal mapping of neurons. May also control the segregation but not the guidance of motor and sensory axons during neuromuscular circuit development.

**Cellular Location**

[Isoform 1]: Cell membrane; Single-pass type I membrane protein

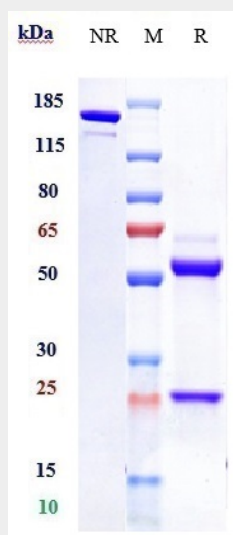
**Tissue Location**

Widely expressed. Highest level in placenta.

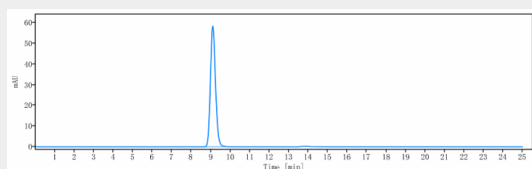
**Anti-EphA3 Reference Antibody (ifabotuzumab) - Protocols**

Provided below are standard protocols that you may find useful for product applications.

- [Western Blot](#)
- [Blocking Peptides](#)
- [Dot Blot](#)
- [Immunohistochemistry](#)
- [Immunofluorescence](#)
- [Immunoprecipitation](#)
- [Flow Cytometry](#)
- [Cell Culture](#)

**Anti-EphA3 Reference Antibody (ifabotuzumab) - Images**

Anti-EphA3 Reference Antibody (ifabotuzumab) on SDS-PAGE under reducing (R) condition. The gel was stained with Coomassie Blue. The purity of the protein is greater than 95%



The purity of Anti-EphA3 Reference Antibody (ifabotuzumab) is more than 95%, determined by SEC-HPLC.