

**Anti-CB1 / CNR1 Reference Antibody (GFB-024)**  
**Recombinant Antibody**  
**Catalog # APR10556****Specification**

---

**Anti-CB1 / CNR1 Reference Antibody (GFB-024) - Product Information**

Application	FC, Kinetics, Animal Model
Primary Accession	<a href="#">Q96F85</a>
Reactivity	Human
Clonality	Monoclonal
Isotype	IgG1
Calculated MW	145 KDa

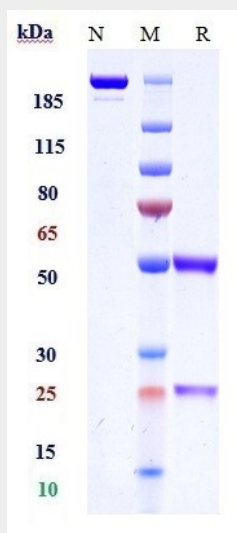
**Anti-CB1 / CNR1 Reference Antibody (GFB-024) - Additional Information****Target/Specificity**  
CB1 / CNR1**Endotoxin**  
< 0.001EU/ µg,determined by LAL method.**Conjugation**  
Unconjugated**Expression system**  
CHO Cell**Format**  
Purified monoclonal antibody supplied in PBS, pH6.0, without preservative.This antibody is purified through a protein A column.**Anti-CB1 / CNR1 Reference Antibody (GFB-024) - Protein Information****Name** CNRIP1**Synonyms** C2orf32**Function**  
[Isoform 1]: Suppresses cannabinoid receptor CNR1-mediated tonic inhibition of voltage-gated calcium channels.**Anti-CB1 / CNR1 Reference Antibody (GFB-024) - Protocols**

Provided below are standard protocols that you may find useful for product applications.

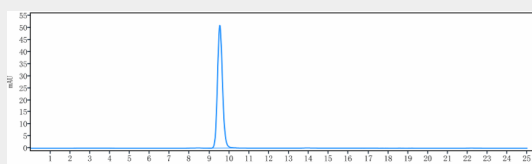
- [Western Blot](#)

- [Blocking Peptides](#)
- [Dot Blot](#)
- [Immunohistochemistry](#)
- [Immunofluorescence](#)
- [Immunoprecipitation](#)
- [Flow Cytometry](#)
- [Cell Culture](#)

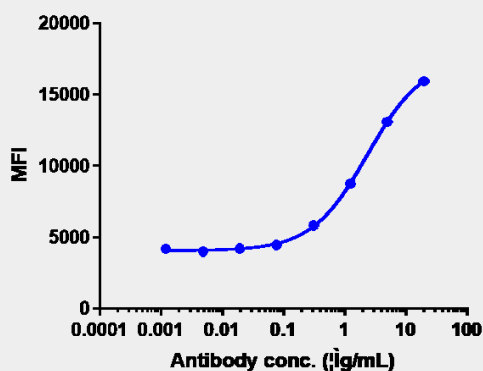
## Anti-CB1 / CNR1 Reference Antibody (GFB-024) - Images



Anti-CB1 / CNR1 Reference Antibody (GFB-024) on SDS-PAGE under reducing (R) condition. The gel was stained with Coomassie Blue. The purity of the protein is greater than 90%



The purity of Anti-CB1 / CNR1 Reference Antibody (GFB-024) is more than 95%, determined by SEC-HPLC.



Human CB1 EGFP CHOS cells were stained with Anti-CB1 / CNR1 Reference Antibody (GFB-024) and negative control protein respectively, washed and then followed by PE and analyzed with FACS, EC622=2.363 µg/mL