

**Anti-TEM1 / Endosialin / CD248 Reference Antibody (ontuxizumab)  
Recombinant Antibody  
Catalog # APR10573****Specification**

---

**Anti-TEM1 / Endosialin / CD248 Reference Antibody (ontuxizumab) - Product Information**

Application	FC, E, FTA
Primary Accession	<a href="#">Q9HCU0</a>
Reactivity	Cynomolgus, Human
Clonality	Monoclonal
Isotype	IgG1
Calculated MW	145 KDa

**Anti-TEM1 / Endosialin / CD248 Reference Antibody (ontuxizumab) - Additional Information****Target/Specificity**

TEM1 / Endosialin / CD248

**Endotoxin**

&lt; 0.001EU/ µg,determined by LAL method.

**Conjugation**

Unconjugated

**Expression system**

CHO Cell

**Format**

Purified monoclonal antibody supplied in PBS, pH6.0, without preservative.This antibody is purified through a protein A column.

**Storage**

-80°C for 2 years under sterile conditions □ -20°C for 1 year under sterile conditions □ Avoid repeated freeze-thaw cycles.

**Anti-TEM1 / Endosialin / CD248 Reference Antibody (ontuxizumab) - Protein Information****Name** CD248**Synonyms** CD164L1, TEM1**Function**

May play a role in tumor angiogenesis.

**Cellular Location**

Membrane; Single-pass type I membrane protein

### Tissue Location

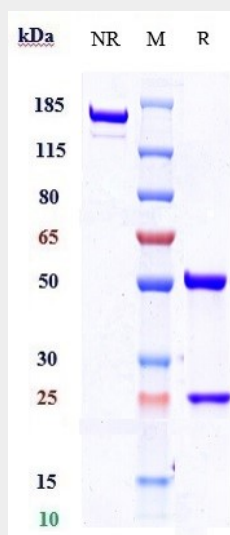
Expressed in tumor endothelial cells but absent or barely detectable in normal endothelial cells. Expressed in metastatic lesions of the liver and during angiogenesis of corpus luteum formation and wound healing. Expressed in vascular endothelial cells of malignant tumors but not in normal blood vessels. Expressed in stromal fibroblasts.

### Anti-TEM1 / Endosialin / CD248 Reference Antibody (ontuxizumab) - Protocols

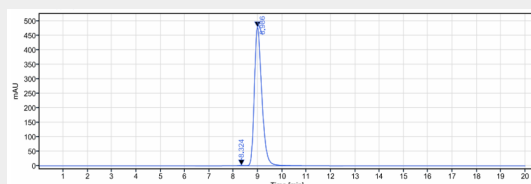
Provided below are standard protocols that you may find useful for product applications.

- [Western Blot](#)
- [Blocking Peptides](#)
- [Dot Blot](#)
- [Immunohistochemistry](#)
- [Immunofluorescence](#)
- [Immunoprecipitation](#)
- [Flow Cytometry](#)
- [Cell Culture](#)

### Anti-TEM1 / Endosialin / CD248 Reference Antibody (ontuxizumab) - Images



Anti-TEM1 / Endosialin / CD248 Reference Antibody (ontuxizumab) on SDS-PAGE under reducing (R) condition. The gel was stained with Coomassie Blue. The purity of the protein is greater than 95%



The purity of Anti-TEM1 / Endosialin / CD248 Reference Antibody (ontuxizumab) is more than 99.57%, determined by SEC-HPLC.