

**Anti-CALCA / CGRP Reference Antibody (galcanezumab)
Recombinant Antibody
Catalog # APR10581****Specification****Anti-CALCA / CGRP Reference Antibody (galcanezumab) - Product Information**

Application	FC, Kinetics, Animal Model
Primary Accession	P06881
Reactivity	Rat, Human
Clonality	Monoclonal
Isotype	IgG4SP
Calculated MW	145 KDa

Anti-CALCA / CGRP Reference Antibody (galcanezumab) - Additional Information**Target/Specificity**
CALCA / CGRP**Endotoxin**
< 0.001EU/ µg,determined by LAL method.**Conjugation**
Unconjugated**Expression system**
CHO Cell**Format**
Purified monoclonal antibody supplied in PBS, pH6.0, without preservative.This antibody is purified through a protein A column.**Anti-CALCA / CGRP Reference Antibody (galcanezumab) - Protein Information****Name** CALCA ([HGNC:1437](#))**Synonyms** CALC1**Function**
CGRP1/CALCA is a peptide hormone that induces vasodilation mediated by the CALCRL-RAMP1 receptor complex (PubMed:1318039, PubMed:33602864, PubMed:9620797). Dilates a variety of vessels including the coronary, cerebral and systemic vasculature. Its abundance in the CNS also points toward a neurotransmitter or neuromodulator role (PubMed:3492492). It also elevates platelet cAMP (PubMed:1318039). CGRP1 can also bind and activate CALCR-RAMP1 (AMYR1) receptor complex (PubMed:38603770).

Cellular Location
Secreted.

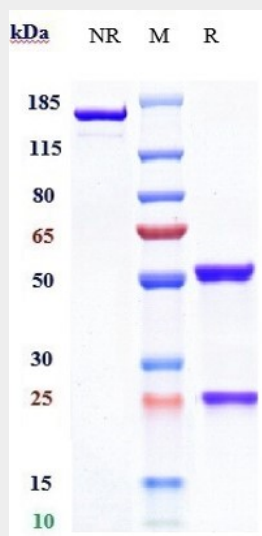
Tissue Location
Expressed in spinal cord.

Anti-CALCA / CGRP Reference Antibody (galcanezumab) - Protocols

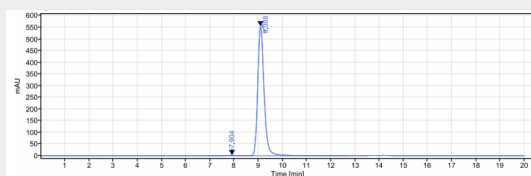
Provided below are standard protocols that you may find useful for product applications.

- [Western Blot](#)
- [Blocking Peptides](#)
- [Dot Blot](#)
- [Immunohistochemistry](#)
- [Immunofluorescence](#)
- [Immunoprecipitation](#)
- [Flow Cytometry](#)
- [Cell Culture](#)

Anti-CALCA / CGRP Reference Antibody (galcanezumab) - Images



Anti-CALCA / CGRP Reference Antibody (galcanezumab) on SDS-PAGE under reducing (R) condition. The gel was stained with Coomassie Blue. The purity of the protein is greater than 95%



The purity of Anti-CALCA / CGRP Reference Antibody (galcanezumab) is more than 99.18%, determined by SEC-HPLC.