

**Anti-CCL20 Reference Antibody (GSK3050002)**  
**Recombinant Antibody**  
**Catalog # APR10585****Specification**

---

**Anti-CCL20 Reference Antibody (GSK3050002) - Product Information**

Application	FC, E, FTA
Primary Accession	<a href="#">P78556</a>
Reactivity	Cynomolgus, Human
Clonality	Monoclonal
Isotype	IgG4
Calculated MW	150 KDa

**Anti-CCL20 Reference Antibody (GSK3050002) - Additional Information****Target/Specificity**  
CCL20**Endotoxin**

< 0.001EU/ µg,determined by LAL method.

**Conjugation**

Unconjugated

**Expression system**

CHO Cell

**Format**

Purified monoclonal antibody supplied in PBS, pH6.0, without preservative.This antibody is purified through a protein A column.

**Storage**

-80°C for 2 years under sterile conditions □ -20°C for 1 year under sterile conditions □ Avoid repeated freeze-thaw cycles.

**Anti-CCL20 Reference Antibody (GSK3050002) - Protein Information****Name** CCL20**Synonyms** LARC, MIP3A, SCYA20**Function**

Acts as a ligand for C-C chemokine receptor CCR6. Signals through binding and activation of CCR6 and induces a strong chemotactic response and mobilization of intracellular calcium ions (PubMed:<a href="http://www.uniprot.org/citations/11352563" target="\_blank">11352563</a>, PubMed:<a href="http://www.uniprot.org/citations/11035086" target="\_blank">11035086</a>, PubMed:<a href="http://www.uniprot.org/citations/20068036" target="\_blank">20068036</a>). The ligand- receptor pair CCL20-CCR6 is responsible for the chemotaxis of dendritic cells (DC),

effector/memory T-cells and B-cells and plays an important role at skin and mucosal surfaces under homeostatic and inflammatory conditions, as well as in pathology, including cancer and various autoimmune diseases (PubMed:<a href="http://www.uniprot.org/citations/21376174" target="\_blank">21376174</a>). CCL20 acts as a chemotactic factor that attracts lymphocytes and, slightly, neutrophils, but not monocytes (PubMed:<a href="http://www.uniprot.org/citations/9038201" target="\_blank">9038201</a>, PubMed:<a href="http://www.uniprot.org/citations/11352563" target="\_blank">11352563</a>). Involved in the recruitment of both the pro-inflammatory IL17 producing helper T-cells (Th17) and the regulatory T-cells (Treg) to sites of inflammation. Required for optimal migration of thymic natural regulatory T cells (nTregs) and DN1 early thymocyte progenitor cells (By similarity). C- terminal processed forms have been shown to be equally chemotactically active for leukocytes (PubMed:<a href="http://www.uniprot.org/citations/11035086" target="\_blank">11035086</a>). Positively regulates sperm motility and chemotaxis via its binding to CCR6 which triggers Ca<sup>2+</sup> mobilization in the sperm which is important for its motility (PubMed:<a href="http://www.uniprot.org/citations/23765988" target="\_blank">23765988</a>, PubMed:<a href="http://www.uniprot.org/citations/25122636" target="\_blank">25122636</a>). Inhibits proliferation of myeloid progenitors in colony formation assays (PubMed:<a href="http://www.uniprot.org/citations/9129037" target="\_blank">9129037</a>). May be involved in formation and function of the mucosal lymphoid tissues by attracting lymphocytes and dendritic cells towards epithelial cells (By similarity). Possesses antibacterial activity towards E.coli ATCC 25922 and S.aureus ATCC 29213 (PubMed:<a href="http://www.uniprot.org/citations/12149255" target="\_blank">12149255</a>).

#### **Cellular Location**

Secreted.

#### **Tissue Location**

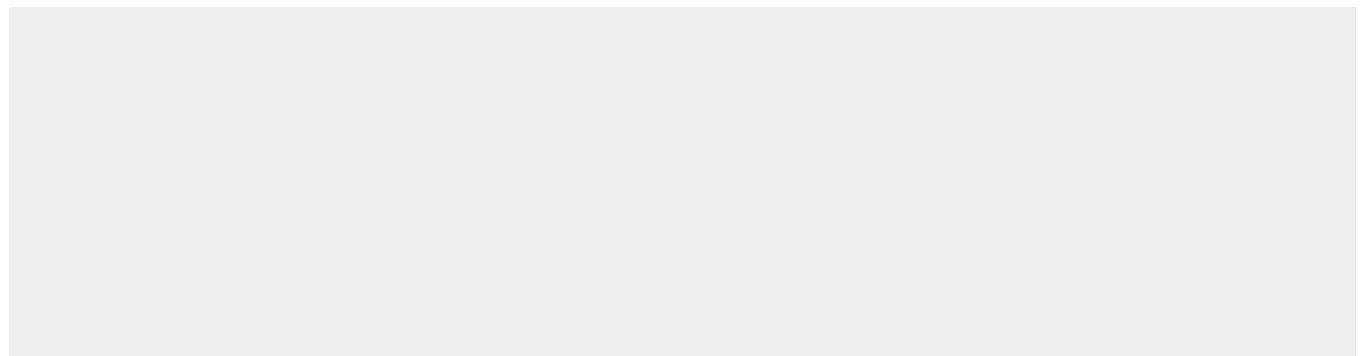
Expressed in the seminal plasma, endometrial fluid and follicular fluid (at protein level). Expressed predominantly in the liver, lymph nodes, appendix, peripheral blood lymphocytes, and fetal lung. Low levels seen in thymus, prostate, testis, small intestine and colon.

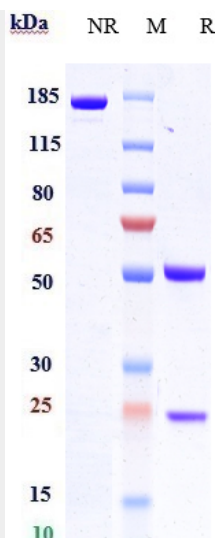
### **Anti-CCL20 Reference Antibody (GSK3050002) - Protocols**

Provided below are standard protocols that you may find useful for product applications.

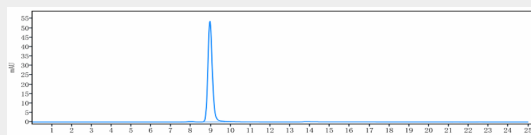
- [Western Blot](#)
- [Blocking Peptides](#)
- [Dot Blot](#)
- [Immunohistochemistry](#)
- [Immunofluorescence](#)
- [Immunoprecipitation](#)
- [Flow Cytometry](#)
- [Cell Culture](#)

### **Anti-CCL20 Reference Antibody (GSK3050002) - Images**





Anti-CCL20 Reference Antibody (GSK3050002) on SDS-PAGE under reducing (R) condition. The gel was stained with Coomassie Blue. The purity of the protein is greater than 95%



The purity of Anti-CCL20 Reference Antibody (GSK3050002) is more than 98.28% ,determined by SEC-HPLC.