

**Anti-RGMC / HFE2 Reference Antibody (DISC-0974)**  
**Recombinant Antibody**  
**Catalog # APR10593****Specification**

---

**Anti-RGMC / HFE2 Reference Antibody (DISC-0974) - Product Information**

Application	<b>FC, Kinetics, Animal Model</b>
Primary Accession	<a href="#">O6ZVN8</a>
Reactivity	<b>Rat, Human</b>
Clonality	<b>Monoclonal</b>
Isotype	<b>IgG1</b>
Calculated MW	<b>145.66 KDa</b>

**Anti-RGMC / HFE2 Reference Antibody (DISC-0974) - Additional Information****Target/Specificity**  
RGMC / HFE2**Endotoxin**  
< 0.001EU/ µg,determined by LAL method.**Conjugation**  
Unconjugated**Expression system**  
CHO Cell**Format**  
Purified monoclonal antibody supplied in PBS, pH6.0, without preservative.This antibody is purified through a protein A column.**Anti-RGMC / HFE2 Reference Antibody (DISC-0974) - Protein Information****Name** HJV ([HGNC:4887](#))**Synonyms** HFE2, RGMC**Function**  
Acts as a bone morphogenetic protein (BMP) coreceptor (PubMed:<a href="http://www.uniprot.org/citations/18976966" target="\_blank">18976966</a>). Through enhancement of BMP signaling regulates hepcidin (HAMP) expression and regulates iron homeostasis (PubMed:<a href="http://www.uniprot.org/citations/18976966" target="\_blank">18976966</a>).**Cellular Location**  
Cell membrane; Lipid-anchor, GPI- anchor. Note=Also released in the extracellular space**Tissue Location**

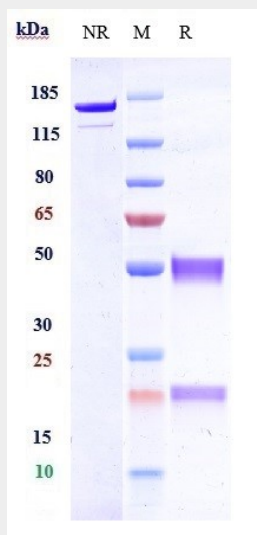
Adult and fetal liver, heart, and skeletal muscle.

### Anti-RGMC / HFE2 Reference Antibody (DISC-0974) - Protocols

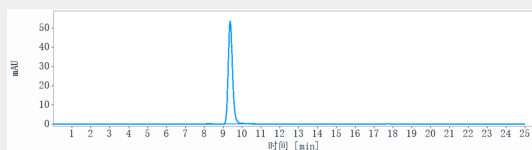
Provided below are standard protocols that you may find useful for product applications.

- [Western Blot](#)
- [Blocking Peptides](#)
- [Dot Blot](#)
- [Immunohistochemistry](#)
- [Immunofluorescence](#)
- [Immunoprecipitation](#)
- [Flow Cytometry](#)
- [Cell Culture](#)

### Anti-RGMC / HFE2 Reference Antibody (DISC-0974) - Images



Anti-RGMC / HFE2 Reference Antibody (DISC-0974) on SDS-PAGE under reducing (R) condition. The gel was stained with Coomassie Blue. The purity of the protein is greater than 95%



The purity of Anti-RGMC / HFE2 Reference Antibody (DISC-0974) is more than 98.22 %, determined by SEC-HPLC.