

**Anti-LY75 / CD205/DEC-205 Reference Antibody (CDX-1401)**  
**Recombinant Antibody**  
**Catalog # APR10596****Specification**

---

**Anti-LY75 / CD205/DEC-205 Reference Antibody (CDX-1401) - Product Information**

|                   |                        |
|-------------------|------------------------|
| Application       | FC, E, FTA             |
| Primary Accession | <a href="#">O60449</a> |
| Reactivity        | Cynomolgus, Human      |
| Clonality         | Monoclonal             |
| Isotype           | IgG1                   |
| Calculated MW     | 145 KDa                |

**Anti-LY75 / CD205/DEC-205 Reference Antibody (CDX-1401) - Additional Information****Target/Specificity**  
LY75 / CD205/DEC-205**Endotoxin**  
< 0.001EU/ µg,determined by LAL method.**Conjugation**  
Unconjugated**Expression system**  
CHO Cell**Format**  
Purified monoclonal antibody supplied in PBS, pH6.0, without preservative.This antibody is purified through a protein A column.**Storage**  
-80°C for 2 years under sterile conditions □ -20°C for 1 year under sterile conditions □ Avoid repeated freeze-thaw cycles.**Anti-LY75 / CD205/DEC-205 Reference Antibody (CDX-1401) - Protein Information****Name** LY75**Synonyms** CD205, CLEC13B**Function**  
Acts as an endocytic receptor to direct captured antigens from the extracellular space to a specialized antigen-processing compartment (By similarity). Causes reduced proliferation of B-lymphocytes.**Cellular Location**  
Membrane; Single-pass type I membrane protein

**Tissue Location**

Expressed in spleen, thymus, colon and peripheral blood lymphocytes. Detected in myeloid and B-lymphoid cell lines Isoform 2 and isoform 3 are expressed in malignant Hodgkin lymphoma cells called Hodgkin and Reed-Sternberg (HRS) cells

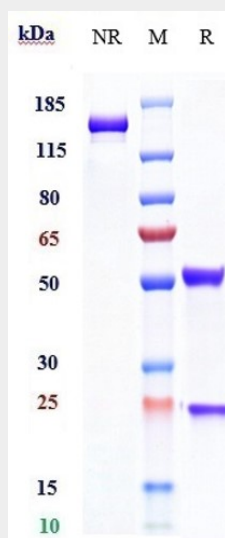
**Anti-LY75 / CD205/DEC-205 Reference Antibody (CDX-1401) - Protocols**

Provided below are standard protocols that you may find useful for product applications.

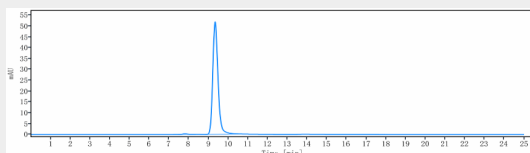
- [Western Blot](#)
- [Blocking Peptides](#)
- [Dot Blot](#)
- [Immunohistochemistry](#)
- [Immunofluorescence](#)
- [Immunoprecipitation](#)

- [Flow Cytometry](#)

- [Cell Culture](#)

**Anti-LY75 / CD205/DEC-205 Reference Antibody (CDX-1401) - Images**

Anti-LY75 / CD205/DEC-205 Reference Antibody (CDX-1401) on SDS-PAGE under reducing (R) condition. The gel was stained with Coomassie Blue. The purity of the protein is greater than 90%



The purity of Anti-LY75 / CD205/DEC-205 Reference Antibody (CDX-1401) is more than 95%, determined by SEC-HPLC.