

**Anti-IL-6 / IFN β 2 Reference Antibody (ziltivekimab)
Recombinant Antibody
Catalog # APR10604****Specification**

Anti-IL-6 / IFN β 2 Reference Antibody (ziltivekimab) - Product Information

Application	FC, Kinetics, Animal Model
Primary Accession	P05231
Reactivity	Human
Clonality	Monoclonal
Isotype	IgG1
Calculated MW	145 KDa

Anti-IL-6 / IFN β 2 Reference Antibody (ziltivekimab) - Additional Information**Target/Specificity**IL-6 / IFN β 2**Endotoxin**< 0.001EU/ μ g,determined by LAL method.**Conjugation**

Unconjugated

Expression system

CHO Cell

Format

Purified monoclonal antibody supplied in PBS, pH6.0, without preservative.This antibody is purified through a protein A column.

Anti-IL-6 / IFN β 2 Reference Antibody (ziltivekimab) - Protein Information**Name** IL6 ([HGNC:6018](#))**Synonyms** IFNB2**Function**

Cytokine with a wide variety of biological functions in immunity, tissue regeneration, and metabolism. Binds to IL6R, then the complex associates to the signaling subunit IL6ST/gp130 to trigger the intracellular IL6-signaling pathway (Probable). The interaction with the membrane-bound IL6R and IL6ST stimulates 'classic signaling', whereas the binding of IL6 and soluble IL6R to IL6ST stimulates 'trans- signaling'. Alternatively, 'cluster signaling' occurs when membrane- bound IL6:IL6R complexes on transmitter cells activate IL6ST receptors on neighboring receiver cells (Probable).

Cellular Location

Secreted.

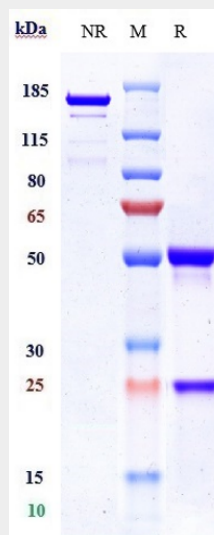
Tissue Location

Produced by skeletal muscle.

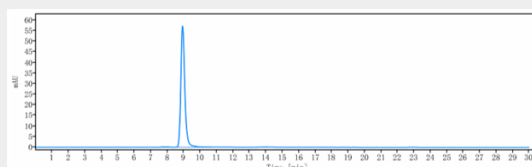
Anti-IL-6 / IFN β 2 Reference Antibody (ziltivekimab) - Protocols

Provided below are standard protocols that you may find useful for product applications.

- [Western Blot](#)
- [Blocking Peptides](#)
- [Dot Blot](#)
- [Immunohistochemistry](#)
- [Immunofluorescence](#)
- [Immunoprecipitation](#)
- [Flow Cytometry](#)
- [Cell Culture](#)

Anti-IL-6 / IFN β 2 Reference Antibody (ziltivekimab) - Images

Anti-IL-6 / IFN β 2 Reference Antibody (ziltivekimab) on SDS-PAGE under reducing (R) condition. The gel was stained with Coomassie Blue. The purity of the protein is greater than 90%



The purity of Anti-IL-6 / IFN β 2 Reference Antibody (ziltivekimab) is more than 95% ,determined by SEC-HPLC.