

**Anti-GPNMB Reference Antibody (glembatumumab vedotin)
Recombinant Antibody
Catalog # APR10618****Specification**

Anti-GPNMB Reference Antibody (glembatumumab vedotin) - Product Information

Application	FC, Kinetics, Animal Model
Primary Accession	Q14956
Reactivity	Human, Mouse
Clonality	Monoclonal
Isotype	IgG2SA
Calculated MW	145.56 KDa

Anti-GPNMB Reference Antibody (glembatumumab vedotin) - Additional Information**Target/Specificity**
GPNMB**Endotoxin**
< 0.001EU/ µg,determined by LAL method.**Conjugation**
MMAE**Expression system**
CHO Cell**Format**
Purified monoclonal antibody supplied in PBS, pH6.0, without preservative.This antibody is purified through a protein A column.**Anti-GPNMB Reference Antibody (glembatumumab vedotin) - Protein Information****Name** GPNMB**Synonyms** HGFIN {ECO:0000303|PubMed:12609765}, NMB**Function**
Could be a melanogenic enzyme.**Cellular Location**
Cell membrane; Single-pass type I membrane protein Melanosome membrane; Single-pass type I membrane protein. Early endosome membrane; Single-pass type I membrane protein.
Note=Identified by mass spectrometry in melanosome fractions from stage I to stage IV**Tissue Location**
Widely expressed, but very low expression, if any, in the brain (PubMed:12609765, PubMed:16609006). Expressed in the epidermis with higher levels in melanocytes compared with

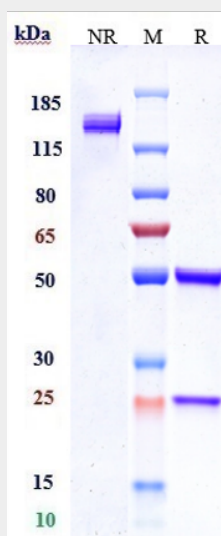
keratinocytes and Langerhans cells (at protein level) (PubMed:29336782). Expressed in peripheral blood, but not bone marrow mononuclear cells (PubMed:12609765). Expressed in tissue macrophages, including liver Kupffer cells and lung alveolar macrophages, in podocytes and in some cells of the ciliary body of the eye (at protein level) (PubMed:16489096). May be overexpressed in various cancers, including melanoma and glioblastoma multiforme (PubMed:16489096, PubMed:16609006, PubMed:7814155).

Anti-GPNMB Reference Antibody (glembatumumab vedotin) - Protocols

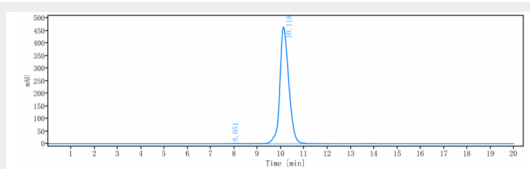
Provided below are standard protocols that you may find useful for product applications.

- [Western Blot](#)
- [Blocking Peptides](#)
- [Dot Blot](#)
- [Immunohistochemistry](#)
- [Immunofluorescence](#)
- [Immunoprecipitation](#)
- [Flow Cytometry](#)
- [Cell Culture](#)

Anti-GPNMB Reference Antibody (glembatumumab vedotin) - Images



Anti-GPNMB Reference Antibody (glembatumumab vedotin) on SDS-PAGE under reducing (R) condition. The gel was stained with Coomassie Blue. The purity of the protein is greater than 95%



The purity of Anti-GPNMB Reference Antibody (glembatumumab vedotin) is more than 99.7%, determined by SEC-HPLC.