

**Anti-FGF23 Reference Antibody (burosumab)
Recombinant Antibody
Catalog # APR10626****Specification**

Anti-FGF23 Reference Antibody (burosumab) - Product Information

Application	FC, Kinetics, Animal Model
Primary Accession	O9GZV9
Reactivity	Human
Clonality	Monoclonal
Isotype	IgG1
Calculated MW	144.08 KDa

Anti-FGF23 Reference Antibody (burosumab) - Additional Information**Target/Specificity**
FGF23**Endotoxin**
< 0.001EU/ µg,determined by LAL method.**Conjugation**
Unconjugated**Expression system**
CHO Cell**Format**
Purified monoclonal antibody supplied in PBS, pH6.0, without preservative.This antibody is purified through a protein A column.**Anti-FGF23 Reference Antibody (burosumab) - Protein Information****Name** FGF23**Synonyms** HYPF**Function**
Regulator of phosphate homeostasis (PubMed:11062477). Inhibits renal tubular phosphate transport by reducing SLC34A1 levels (PubMed:11409890). Up-regulates EGR1 expression in the presence of KL (By similarity). Acts directly on the parathyroid to decrease PTH secretion (By similarity). Regulator of vitamin-D metabolism (PubMed:15040831). Negatively regulates osteoblast differentiation and matrix mineralization (PubMed:18282132).

Cellular Location

Secreted. Note=Secretion is dependent on O-glycosylation

Tissue Location

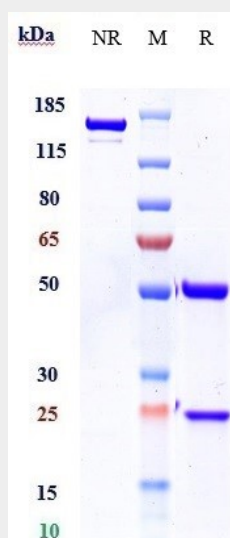
Expressed in osteogenic cells particularly during phases of active bone remodeling. In adult trabecular bone, expressed in osteocytes and flattened bone-lining cells (inactive osteoblasts)

Anti-FGF23 Reference Antibody (burosumab) - Protocols

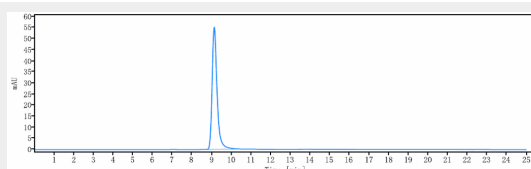
Provided below are standard protocols that you may find useful for product applications.

- [Western Blot](#)
- [Blocking Peptides](#)
- [Dot Blot](#)
- [Immunohistochemistry](#)
- [Immunofluorescence](#)
- [Immunoprecipitation](#)
- [Flow Cytometry](#)
- [Cell Culture](#)

Anti-FGF23 Reference Antibody (burosumab) - Images



Anti-FGF23 Reference Antibody (burosumab) on SDS-PAGE under reducing (R) condition. The gel was stained with Coomassie Blue. The purity of the protein is greater than 95%



The purity of Anti-FGF23 Reference Antibody (burosumab) is more than 95%, determined by SEC-HPLC.