

**Anti-TFPI Reference Antibody (befovacimab)
Recombinant Antibody
Catalog # APR10653****Specification**

Anti-TFPI Reference Antibody (befovacimab) - Product Information

Application	FC, Kinetics, Animal Model
Primary Accession	P10646
Reactivity	Human
Clonality	Monoclonal
Isotype	IgG2SA
Calculated MW	143.24 KDa

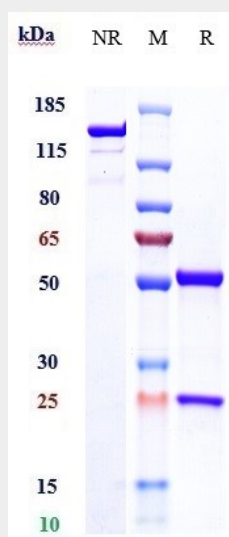
Anti-TFPI Reference Antibody (befovacimab) - Additional Information**Target/Specificity**
TFPI**Endotoxin**
< 0.001EU/ µg,determined by LAL method.**Conjugation**
Unconjugated**Expression system**
CHO Cell**Format**
Purified monoclonal antibody supplied in PBS, pH6.0, without preservative.This antibody is purified through a protein A column.**Anti-TFPI Reference Antibody (befovacimab) - Protein Information****Name** TFPI**Synonyms** LACI, TFPI1**Function**
Inhibits factor X (X(a)) directly and, in a Xa-dependent way, inhibits VIIa/tissue factor activity, presumably by forming a quaternary Xa/LACI/VIIa/TF complex. It possesses an antithrombotic action and also the ability to associate with lipoproteins in plasma.**Cellular Location**
[Isoform Alpha]: Secreted.**Tissue Location**
Mostly in endothelial cells.

Anti-TFPI Reference Antibody (befovacimab) - Protocols

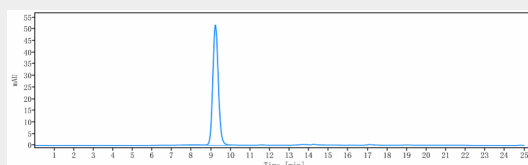
Provided below are standard protocols that you may find useful for product applications.

- [Western Blot](#)
- [Blocking Peptides](#)
- [Dot Blot](#)
- [Immunohistochemistry](#)
- [Immunofluorescence](#)
- [Immunoprecipitation](#)
- [Flow Cytometry](#)
- [Cell Culture](#)

Anti-TFPI Reference Antibody (befovacimab) - Images



Anti-TFPI Reference Antibody (befovacimab) on SDS-PAGE under reducing (R) condition. The gel was stained with Coomassie Blue. The purity of the protein is greater than 90%



The purity of Anti-TFPI Reference Antibody (befovacimab) is more than 95%, determined by SEC-HPLC.