

**Anti-CTLA-4 / CD152 Reference Antibody (nurulimab)
Recombinant Antibody
Catalog # APR10654****Specification**

Anti-CTLA-4 / CD152 Reference Antibody (nurulimab) - Product Information

Application	FC, E, FTA
Primary Accession	P16410
Reactivity	Human
Clonality	Monoclonal
Isotype	IgG1
Calculated MW	143.78 KDa

Anti-CTLA-4 / CD152 Reference Antibody (nurulimab) - Additional Information**Target/Specificity**
CTLA-4 / CD152**Endotoxin**
< 0.001EU/ µg,determined by LAL method.**Conjugation**
Unconjugated**Expression system**
CHO Cell**Format**
Purified monoclonal antibody supplied in PBS, pH6.0, without preservative.This antibody is purified through a protein A column.**Storage**
-80°C for 2 years under sterile conditions □ -20°C for 1 year under sterile conditions □ Avoid repeated freeze-thaw cycles.**Anti-CTLA-4 / CD152 Reference Antibody (nurulimab) - Protein Information****Name** CTLA4**Synonyms** CD152**Function**
Inhibitory receptor acting as a major negative regulator of T-cell responses. The affinity of CTLA4 for its natural B7 family ligands, CD80 and CD86, is considerably stronger than the affinity of their cognate stimulatory coreceptor CD28.**Cellular Location**
Cell membrane; Single-pass type I membrane protein. Note=Exists primarily an intracellular

antigen whose surface expression is tightly regulated by restricted trafficking to the cell surface and rapid internalization

Tissue Location

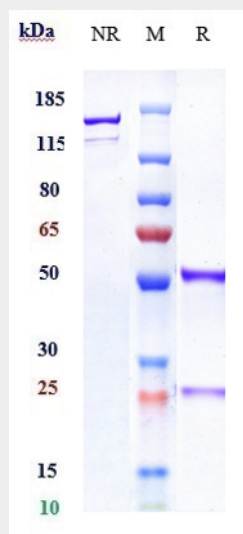
Widely expressed with highest levels in lymphoid tissues. Detected in activated T-cells where expression levels are 30- to 50-fold less than CD28, the stimulatory coreceptor, on the cell surface following activation.

Anti-CTLA-4 / CD152 Reference Antibody (nurulimab) - Protocols

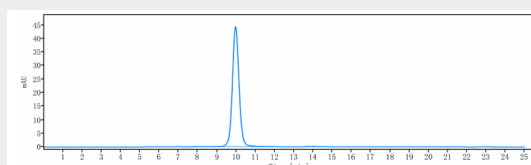
Provided below are standard protocols that you may find useful for product applications.

- [Western Blot](#)
- [Blocking Peptides](#)
- [Dot Blot](#)
- [Immunohistochemistry](#)
- [Immunofluorescence](#)
- [Immunoprecipitation](#)
- [Flow Cytometry](#)
- [Cell Culture](#)

Anti-CTLA-4 / CD152 Reference Antibody (nurulimab) - Images



Anti-CTLA-4 / CD152 Reference Antibody (nurulimab) on SDS-PAGE under reducing (R) condition. The gel was stained with Coomassie Blue. The purity of the protein is greater than 95%



The purity of Anti-CTLA-4 / CD152 Reference Antibody (nurulimab) is more than 100% ,determined by SEC-HPLC.