

**Anti-FOLH1 / PSMA Reference Antibody (pelgifatamAb)
Recombinant Antibody
Catalog # APR10659****Specification**

Anti-FOLH1 / PSMA Reference Antibody (pelgifatamAb) - Product Information

Application	FC, Kinetics, Animal Model
Primary Accession	Q04609
Reactivity	Human
Clonality	Monoclonal
Isotype	IgG1
Calculated MW	145 KDa

Anti-FOLH1 / PSMA Reference Antibody (pelgifatamAb) - Additional Information**Target/Specificity**

FOLH1 / PSMA

Endotoxin

< 0.001EU/ µg,determined by LAL method.

Conjugation

Unconjugated

Expression system

CHO Cell

Format

Purified monoclonal antibody supplied in PBS, pH6.0, without preservative.This antibody is purified through a protein A column.

Anti-FOLH1 / PSMA Reference Antibody (pelgifatamAb) - Protein Information**Name** FOLH1 ([HGNC:3788](#))**Synonyms** FOLH, NAALAD1, PSM, PSMA**Function**

Has both folate hydrolase and N-acetylated-alpha-linked- acidic dipeptidase (NAALADase) activity. Has a preference for tri- alpha-glutamate peptides. In the intestine, required for the uptake of folate. In the brain, modulates excitatory neurotransmission through the hydrolysis of the neuropeptide, N-aceylaspartylglutamate (NAAG), thereby releasing glutamate. Involved in prostate tumor progression.

Cellular Location

Cell membrane; Single-pass type II membrane protein

Tissue Location

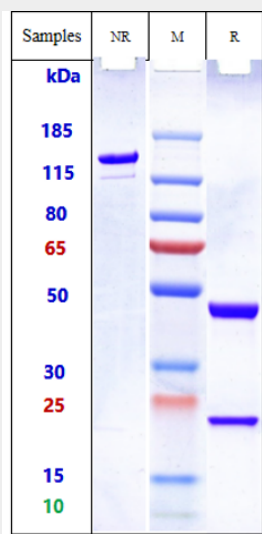
Highly expressed in prostate epithelium. Detected in urinary bladder, kidney, testis, ovary, fallopian tube, breast, adrenal gland, liver, esophagus, stomach, small intestine, colon and brain (at protein level). Detected in the small intestine, brain, kidney, liver, spleen, colon, trachea, spinal cord and the capillary endothelium of a variety of tumors. Expressed specifically in jejunum brush border membranes. In the brain, highly expressed in the ventral striatum and brain stem. Also expressed in fetal liver and kidney Isoform PSMA' is the most abundant form in normal prostate. Isoform PSMA-1 is the most abundant form in primary prostate tumors. Isoform PSMA-9 is specifically expressed in prostate cancer

Anti-FOLH1 / PSMA Reference Antibody (pelgifatamAb) - Protocols

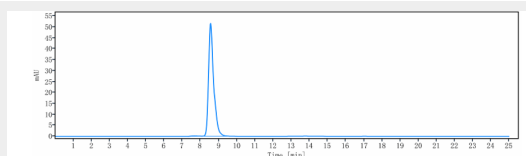
Provided below are standard protocols that you may find useful for product applications.

- [Western Blot](#)
- [Blocking Peptides](#)
- [Dot Blot](#)
- [Immunohistochemistry](#)
- [Immunofluorescence](#)
- [Immunoprecipitation](#)
- [Flow Cytometry](#)
- [Cell Culture](#)

Anti-FOLH1 / PSMA Reference Antibody (pelgifatamAb) - Images



Anti-FOLH1 / PSMA Reference Antibody (pelgifatamAb) on SDS-PAGE under reducing (R) condition. The gel was stained with Coomassie Blue. The purity of the protein is greater than 90%



The purity of Anti-FOLH1 / PSMA Reference Antibody (pelgifatamAb) is more than 95%, determined by SEC-HPLC.