

**Anti-ILDR2 Reference Antibody (bapotulimab)
Recombinant Antibody
Catalog # APR10661****Specification**

Anti-ILDR2 Reference Antibody (bapotulimab) - Product Information

Application	FC, E, FTA
Primary Accession	Q71H61
Reactivity	Human, Mouse
Clonality	Monoclonal
Isotype	IgG2SA
Calculated MW	145 KDa

Anti-ILDR2 Reference Antibody (bapotulimab) - Additional Information**Target/Specificity**
ILDR2**Endotoxin**
< 0.001EU/ µg,determined by LAL method.**Conjugation**
Unconjugated**Expression system**
CHO Cell**Format**
Purified monoclonal antibody supplied in PBS, pH6.0, without preservative.This antibody is purified through a protein A column.**Anti-ILDR2 Reference Antibody (bapotulimab) - Protein Information****Name** ILDR2 ([HGNC:18131](#))**Synonyms** C1orf32**Function**
May be involved in ER stress pathways with effects on lipid homeostasis and insulin secretion. With ILDR1 and LSR, involved in the maintain of the epithelial barrier function through the recruitment of MARVELD2/tricellulin to tricellular tight junctions (By similarity). Also functions as a B7-like protein family member expressed on immune cells and inflamed tissue and with T-cell inhibitory activity (PubMed:29431694). In the inner ear, may regulate alternative pre-mRNA splicing via binding to TRA2A, TRA2B and SRSF1 (By similarity).**Cellular Location**
Endoplasmic reticulum membrane {ECO:0000250|UniProtKB:B5TVM2}; Single-pass type I

membrane protein {ECO:0000250|UniProtKB:B5TVM2}. Cell junction, tight junction {ECO:0000250|UniProtKB:B5TVM2}. Nucleus {ECO:0000250|UniProtKB:B5TVM2}

Tissue Location

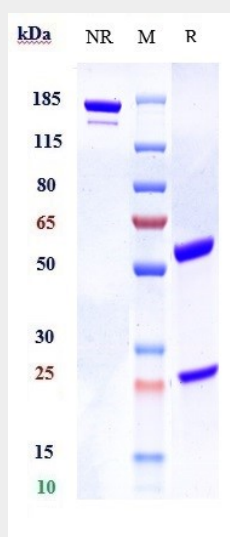
Expressed in testis, brain, pituitary, colon, heart, nerves, prostate, esophagus, lung liver and small intestine (PubMed:29431694). Highly expressed in macrophages, also expressed in monocytes and at low levels in NK and NKT cells (at protein level) (PubMed:29431694).

Anti-ILDR2 Reference Antibody (bapotulimab) - Protocols

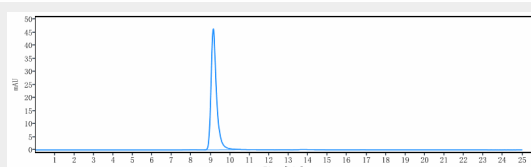
Provided below are standard protocols that you may find useful for product applications.

- [Western Blot](#)
- [Blocking Peptides](#)
- [Dot Blot](#)
- [Immunohistochemistry](#)
- [Immunofluorescence](#)
- [Immunoprecipitation](#)
- [Flow Cytometry](#)
- [Cell Culture](#)

Anti-ILDR2 Reference Antibody (bapotulimab) - Images



Anti-ILDR2 Reference Antibody (bapotulimab) on SDS-PAGE under reducing (R) condition. The gel was stained with Coomassie Blue. The purity of the protein is greater than 90%



The purity of Anti-ILDR2 Reference Antibody (bapotulimab) is more than 95%, determined by SEC-HPLC.