

Anti-Phosphorylcholine Reference Antibody (ATH3G10)
Recombinant Antibody
Catalog # APR10665**Specification**

Anti-Phosphorylcholine Reference Antibody (ATH3G10) - Product Information

Application	FC, Kinetics, Animal Model
Primary Accession	Q9Y5K3
Reactivity	Human
Clonality	Monoclonal
Isotype	IgG1
Calculated MW	150 KDa

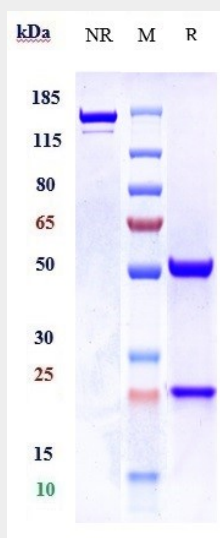
Anti-Phosphorylcholine Reference Antibody (ATH3G10) - Additional Information**Target/Specificity**
Phosphorylcholine**Endotoxin**
< 0.001EU/ µg,determined by LAL method.**Conjugation**
Unconjugated**Expression system**
CHO Cell**Format**
Purified monoclonal antibody supplied in PBS, pH6.0, without preservative.This antibody is purified through a protein A column.**Anti-Phosphorylcholine Reference Antibody (ATH3G10) - Protein Information****Name** PCYT1B**Synonyms** CCTB**Function**
[Isoform 1]: Catalyzes the key rate-limiting step in the CDP- choline pathway for phosphatidylcholine biosynthesis.**Cellular Location**
[Isoform 1]: Cytoplasm. Endoplasmic reticulum**Tissue Location**
[Isoform 1]: Highly expressed in testis, placenta, brain, ovary, liver and fetal lung.

Anti-Phosphorylcholine Reference Antibody (ATH3G10) - Protocols

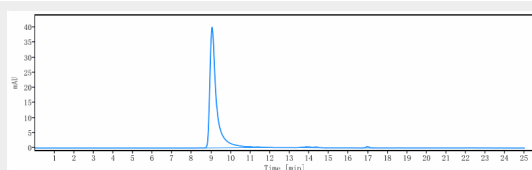
Provided below are standard protocols that you may find useful for product applications.

- [Western Blot](#)
- [Blocking Peptides](#)
- [Dot Blot](#)
- [Immunohistochemistry](#)
- [Immunofluorescence](#)
- [Immunoprecipitation](#)
- [Flow Cytometry](#)
- [Cell Culture](#)

Anti-Phosphorylcholine Reference Antibody (ATH3G10) - Images



Anti-Phosphorylcholine Reference Antibody (ATH3G10) on SDS-PAGE under reducing (R) condition. The gel was stained with Coomassie Blue. The purity of the protein is greater than 95%



The purity of Anti-Phosphorylcholine Reference Antibody (ATH3G10) is more than 96.73 %, determined by SEC-HPLC.