

**Anti-IL-1RL1 / ST2 / IL-33R Reference Antibody (astegolimab)  
Recombinant Antibody  
Catalog # APR10667****Specification**

---

**Anti-IL-1RL1 / ST2 / IL-33R Reference Antibody (astegolimab) - Product Information**

Application	FC, Kinetics, Animal Model
Primary Accession	<a href="#">Q01638</a>
Reactivity	Human, Mouse
Clonality	Monoclonal
Isotype	IgG2SA
Calculated MW	144.98 KDa

**Anti-IL-1RL1 / ST2 / IL-33R Reference Antibody (astegolimab) - Additional Information****Target/Specificity**  
IL-1RL1 / ST2 / IL-33R**Endotoxin**  
< 0.001EU/ µg,determined by LAL method.**Conjugation**  
Unconjugated**Expression system**  
CHO Cell**Format**  
Purified monoclonal antibody supplied in PBS, pH6.0, without preservative.This antibody is purified through a protein A column.**Anti-IL-1RL1 / ST2 / IL-33R Reference Antibody (astegolimab) - Protein Information****Name** IL1RL1**Synonyms** DER4, ST2, T1**Function**  
Receptor for interleukin-33 (IL-33) which plays crucial roles in innate and adaptive immunity, contributing to tissue homeostasis and responses to environmental stresses together with coreceptor IL1RAP (PubMed:<a href="http://www.uniprot.org/citations/35238669" target="\_blank">35238669</a>). Its stimulation recruits MYD88, IRAK1, IRAK4, and TRAF6, followed by phosphorylation of MAPK3/ERK1 and/or MAPK1/ERK2, MAPK14, and MAPK8. Possibly involved in helper T-cell function (Probable) (PubMed:<a href="http://www.uniprot.org/citations/16286016" target="\_blank">16286016</a>). Upon tissue injury, induces UCP2- dependent mitochondrial rewiring that attenuates the generation of reactive oxygen species and preserves the integrity of Krebs cycle required for persistent production of itaconate and subsequent GATA3- dependent differentiation of inflammation-resolving

alternatively activated macrophages (By similarity).

#### Cellular Location

[Isoform C]: Cell membrane. Cell membrane; Single-pass type I membrane protein

#### Tissue Location

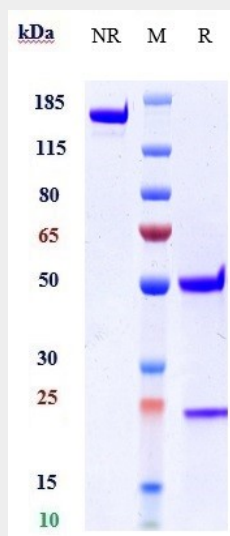
Highly expressed in kidney, lung, placenta, stomach, skeletal muscle, colon and small intestine. Isoform A is prevalently expressed in the lung, testis, placenta, stomach and colon Isoform B is more abundant in the brain, kidney and the liver. Isoform C is not detected in brain, heart, liver, kidney and skeletal muscle Expressed on T-cells in fibrotic liver; at protein level. Overexpressed in fibrotic and cirrhotic liver.

### Anti-IL-1RL1 / ST2 / IL-33R Reference Antibody (astegolimab) - Protocols

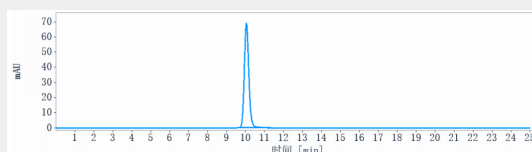
Provided below are standard protocols that you may find useful for product applications.

- [Western Blot](#)
- [Blocking Peptides](#)
- [Dot Blot](#)
- [Immunohistochemistry](#)
- [Immunofluorescence](#)
- [Immunoprecipitation](#)
- [Flow Cytometry](#)
- [Cell Culture](#)

### Anti-IL-1RL1 / ST2 / IL-33R Reference Antibody (astegolimab) - Images



Anti-IL-1RL1 / ST2 / IL-33R Reference Antibody (astegolimab) on SDS-PAGE under reducing (R) condition. The gel was stained with Coomassie Blue. The purity of the protein is greater than 95%



The purity of Anti-IL-1RL1 / ST2 / IL-33R Reference Antibody (astegolimab) is more than 100%, determined by SEC-HPLC.

