

Anti-SIRPa / CD172a Reference Antibody (BI 765063)
Recombinant Antibody
Catalog # APR10676**Specification**

Anti-SIRPa / CD172a Reference Antibody (BI 765063) - Product Information

Application	FC, Kinetics, Animal Model
Primary Accession	P78324
Reactivity	Human
Clonality	Monoclonal
Isotype	IgG4PE
Calculated MW	144.36 KDa

Anti-SIRPa / CD172a Reference Antibody (BI 765063) - Additional Information**Target/Specificity**
SIRPa / CD172a**Endotoxin**
< 0.001EU/ µg,determined by LAL method.**Conjugation**
Unconjugated**Expression system**
CHO Cell**Format**
Purified monoclonal antibody supplied in PBS, pH6.0, without preservative.This antibody is purified through a protein A column.**Anti-SIRPa / CD172a Reference Antibody (BI 765063) - Protein Information****Name** SIRPA**Synonyms** BIT, MFR, MYD1, PTPNS1, SHPS1, SIRP**Function**
Immunoglobulin-like cell surface receptor for CD47. Acts as docking protein and induces translocation of PTPN6, PTPN11 and other binding partners from the cytosol to the plasma membrane. Supports adhesion of cerebellar neurons, neurite outgrowth and glial cell attachment. May play a key role in intracellular signaling during synaptogenesis and in synaptic function (By similarity). Involved in the negative regulation of receptor tyrosine kinase-coupled cellular responses induced by cell adhesion, growth factors or insulin. Mediates negative regulation of phagocytosis, mast cell activation and dendritic cell activation. CD47 binding prevents maturation of immature dendritic cells and inhibits cytokine production by mature dendritic cells. Plays a role in antiviral immunity and limits new world arenavirus infection by decreasing virus internalization (By similarity). Receptor for THBS1 (PubMed:<a href="http://www.uniprot.org/citations/24511121"

target="_blank">24511121). Interaction with THBS1 stimulates phosphorylation of SIRPA (By similarity). In response to THBS1, involved in ROS signaling in non-phagocytic cells, stimulating NADPH oxidase-derived ROS production (PubMed:24511121).

Cellular Location

Membrane; Single-pass type I membrane protein.

Tissue Location

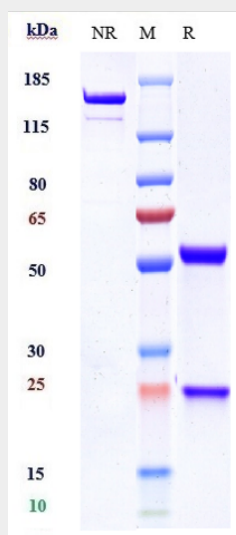
Ubiquitous. Highly expressed in brain. Detected on myeloid cells, but not T-cells. Detected at lower levels in heart, placenta, lung, testis, ovary, colon, liver, small intestine, prostate, spleen, kidney, skeletal muscle and pancreas

Anti-SIRPa / CD172a Reference Antibody (BI 765063) - Protocols

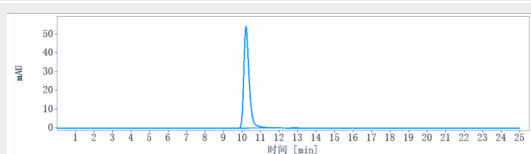
Provided below are standard protocols that you may find useful for product applications.

- [Western Blot](#)
- [Blocking Peptides](#)
- [Dot Blot](#)
- [Immunohistochemistry](#)
- [Immunofluorescence](#)
- [Immunoprecipitation](#)
- [Flow Cytometry](#)
- [Cell Culture](#)

Anti-SIRPa / CD172a Reference Antibody (BI 765063) - Images



Anti-SIRPa / CD172a Reference Antibody (BI 765063) on SDS-PAGE under reducing (R) condition. The gel was stained with Coomassie Blue. The purity of the protein is greater than 90%



The purity of Anti-SIRPa / CD172a Reference Antibody (BI 765063) is more than 95% ,determined

by SEC-HPLC.