

Anti-PSCA Reference Antibody (AGS-1C4D4)
Recombinant Antibody
Catalog # APR10677**Specification**

Anti-PSCA Reference Antibody (AGS-1C4D4) - Product Information

Application	FC, E, FTA
Primary Accession	O43653
Reactivity	Human, Mouse
Clonality	Monoclonal
Isotype	IgG1
Calculated MW	148.66 KDa

Anti-PSCA Reference Antibody (AGS-1C4D4) - Additional Information**Target/Specificity**
PSCA**Endotoxin**
< 0.001EU/ µg,determined by LAL method.**Conjugation**
Unconjugated**Expression system**
CHO Cell**Format**
Purified monoclonal antibody supplied in PBS, pH6.0, without preservative.This antibody is purified through a protein A column.**Storage**
-80°C for 2 years under sterile conditions □ -20°C for 1 year under sterile conditions □ Avoid repeated freeze-thaw cycles.**Anti-PSCA Reference Antibody (AGS-1C4D4) - Protein Information****Name** PSCA**Function**
May be involved in the regulation of cell proliferation. Has a cell-proliferation inhibition activity in vitro.**Cellular Location**
Cell membrane; Lipid-anchor, GPI-anchor**Tissue Location**
Highly expressed in prostate (basal, secretory and neuroendocrine epithelium cells). Also found in

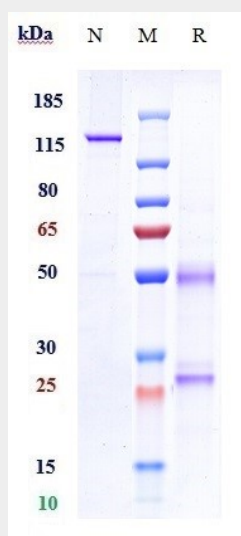
bladder (transitional epithelium), placenta (trophoblasts), stomach (neuroendocrine cells), colon (neuroendocrine cells) and kidney (collecting ducts) Overexpressed in prostate cancers and expression is correlated with tumor stage, grade and androgen-independence. Highly expressed in prostate cancer bone metastases. Expressed in gastric epithelial cells, mainly in the isthmus (at protein level). Not detected in normal intestinal epithelium (at protein level). Expressed in brain cortex; expression is significantly increased in the front cortex of Alzheimer disease patients.

Anti-PSCA Reference Antibody (AGS-1C4D4) - Protocols

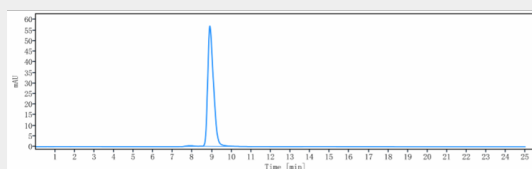
Provided below are standard protocols that you may find useful for product applications.

- [Western Blot](#)
- [Blocking Peptides](#)
- [Dot Blot](#)
- [Immunohistochemistry](#)
- [Immunofluorescence](#)
- [Immunoprecipitation](#)
- [Flow Cytometry](#)
- [Cell Culture](#)

Anti-PSCA Reference Antibody (AGS-1C4D4) - Images



Anti-PSCA Reference Antibody (AGS-1C4D4) on SDS-PAGE under reducing (R) condition. The gel was stained with Coomassie Blue. The purity of the protein is greater than 97.9%



The purity of Anti-PSCA Reference Antibody (AGS-1C4D4) is more than 95% ,determined by SEC-HPLC.