

**Anti-CSF1 / M-CSF Reference Antibody (lacnotuzumab)
Recombinant Antibody
Catalog # APR10682****Specification**

Anti-CSF1 / M-CSF Reference Antibody (lacnotuzumab) - Product Information

Application	FC, Kinetics, Animal Model
Primary Accession	P09603
Reactivity	Human
Clonality	Monoclonal
Isotype	IgG1
Calculated MW	145 KDa

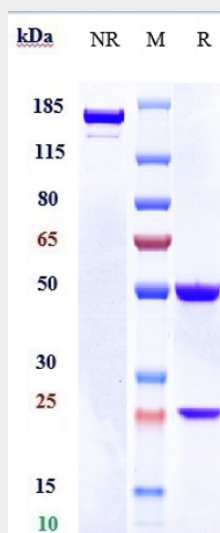
Anti-CSF1 / M-CSF Reference Antibody (lacnotuzumab) - Additional Information**Target/Specificity**
CSF1 / M-CSF**Endotoxin**
< 0.001EU/ µg,determined by LAL method.**Conjugation**
Unconjugated**Expression system**
CHO Cell**Format**
Purified monoclonal antibody supplied in PBS, pH6.0, without preservative.This antibody is purified through a protein A column.**Anti-CSF1 / M-CSF Reference Antibody (lacnotuzumab) - Protein Information****Name** CSF1**Function**
Cytokine that plays an essential role in the regulation of survival, proliferation and differentiation of hematopoietic precursor cells, especially mononuclear phagocytes, such as macrophages and monocytes. Promotes the release of pro-inflammatory chemokines, and thereby plays an important role in innate immunity and in inflammatory processes. Plays an important role in the regulation of osteoclast proliferation and differentiation, the regulation of bone resorption, and is required for normal bone development. Required for normal male and female fertility. Promotes reorganization of the actin cytoskeleton, regulates formation of membrane ruffles, cell adhesion and cell migration. Plays a role in lipoprotein clearance.**Cellular Location**
Cell membrane; Single-pass type I membrane protein

Anti-CSF1 / M-CSF Reference Antibody (lacnotuzumab) - Protocols

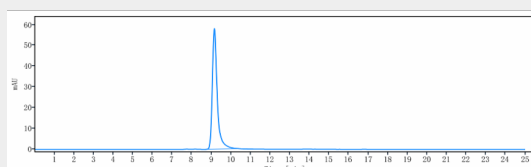
Provided below are standard protocols that you may find useful for product applications.

- [Western Blot](#)
- [Blocking Peptides](#)
- [Dot Blot](#)
- [Immunohistochemistry](#)
- [Immunofluorescence](#)
- [Immunoprecipitation](#)
- [Flow Cytometry](#)
- [Cell Culture](#)

Anti-CSF1 / M-CSF Reference Antibody (lacnotuzumab) - Images



Anti-CSF1 / M-CSF Reference Antibody (lacnotuzumab) on SDS-PAGE under reducing (R) condition. The gel was stained with Coomassie Blue. The purity of the protein is greater than 90%



The purity of Anti-CSF1 / M-CSF Reference Antibody (lacnotuzumab) is more than 95%, determined by SEC-HPLC.