

Anti-Ly6E Reference Antibody (RG7841)
Recombinant Antibody
Catalog # APR10683**Specification**

Anti-Ly6E Reference Antibody (RG7841) - Product Information

Application	FC, Kinetics, Animal Model
Primary Accession	Q16553
Reactivity	Human
Clonality	Monoclonal
Isotype	IgG2SA
Calculated MW	150 KDa

Anti-Ly6E Reference Antibody (RG7841) - Additional Information**Target/Specificity**
Ly6E**Endotoxin**
< 0.001EU/ µg,determined by LAL method.**Conjugation**
Unconjugated**Expression system**
CHO Cell**Format**
Purified monoclonal antibody supplied in PBS, pH6.0, without preservative.This antibody is purified through a protein A column.**Anti-Ly6E Reference Antibody (RG7841) - Protein Information****Name** LY6E ([HGNC:6727](#))**Synonyms** 9804, RIGE, SCA2, TSA1**Function**
GPI-anchored cell surface protein that regulates T- lymphocytes proliferation, differentiation, and activation. Regulates the T-cell receptor (TCR) signaling by interacting with component CD3Z/CD247 at the plasma membrane, leading to CD3Z/CD247 phosphorylation modulation (By similarity). Restricts the entry of human coronaviruses, including SARS-CoV, MERS-CoV and SARS-CoV-2, by interfering with spike protein-mediated membrane fusion (PubMed:32641482). Also plays an essential role in placenta formation by acting as the main receptor for syncytin-A (SynA). Therefore, participates in the normal fusion of syncytiotrophoblast layer I (SynT- I) and in the proper morphogenesis of both fetal and maternal vasculatures within the placenta. May also act as a modulator of nicotinic acetylcholine receptors (nAChRs) activity (By similarity).

Cellular Location

Cell membrane {ECO:0000250|UniProtKB:Q64253}; Lipid-anchor, GPI-anchor
{ECO:0000250|UniProtKB:Q64253}

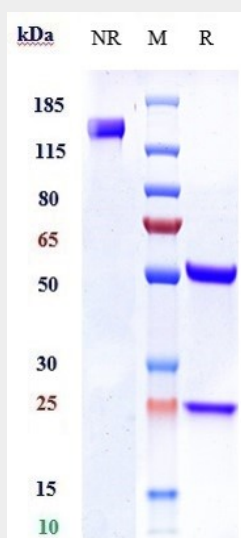
Tissue Location

Widely expressed, predominantly in liver, kidney, ovary, spleen and peripheral blood Leukocytes

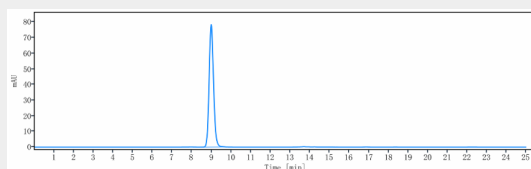
Anti-Ly6E Reference Antibody (RG7841) - Protocols

Provided below are standard protocols that you may find useful for product applications.

- [Western Blot](#)
- [Blocking Peptides](#)
- [Dot Blot](#)
- [Immunohistochemistry](#)
- [Immunofluorescence](#)
- [Immunoprecipitation](#)
- [Flow Cytometry](#)
- [Cell Culture](#)

Anti-Ly6E Reference Antibody (RG7841) - Images

Anti-Ly6E Reference Antibody (RG7841) on SDS-PAGE under reducing (R) condition. The gel was stained with Coomassie Blue. The purity of the protein is greater than 95%



The purity of Anti-Ly6E Reference Antibody (RG7841) is more than 95% ,determined by SEC-HPLC.