

**Anti-PSGL1 / CD162 Reference Antibody (neihulizumab)
Recombinant Antibody
Catalog # APR10713****Specification**

Anti-PSGL1 / CD162 Reference Antibody (neihulizumab) - Product Information

Application	FC, Kinetics, Animal Model
Primary Accession	Q14242
Reactivity	Human, Mouse
Clonality	Monoclonal
Isotype	IgG4
Calculated MW	145.72 KDa

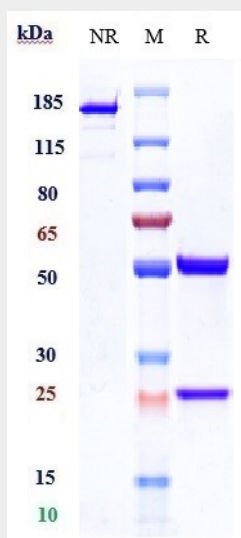
Anti-PSGL1 / CD162 Reference Antibody (neihulizumab) - Additional Information**Target/Specificity**
PSGL1 / CD162**Endotoxin**
< 0.001EU/ µg,determined by LAL method.**Conjugation**
Unconjugated**Expression system**
CHO Cell**Format**
Purified monoclonal antibody supplied in PBS, pH6.0, without preservative.This antibody is purified through a protein A column.**Anti-PSGL1 / CD162 Reference Antibody (neihulizumab) - Protein Information****Name** SELPLG**Function**
A SLe(x)-type proteoglycan, which through high affinity, calcium-dependent interactions with E-, P- and L-selectins, mediates rapid rolling of leukocytes over vascular surfaces during the initial steps in inflammation. Critical for the initial leukocyte capture.**Cellular Location**
Membrane; Single-pass type I membrane protein.**Tissue Location**
Expressed on neutrophils, monocytes and most lymphocytes

Anti-PSGL1 / CD162 Reference Antibody (neihulizumab) - Protocols

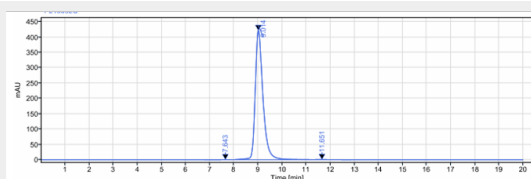
Provided below are standard protocols that you may find useful for product applications.

- [Western Blot](#)
- [Blocking Peptides](#)
- [Dot Blot](#)
- [Immunohistochemistry](#)
- [Immunofluorescence](#)
- [Immunoprecipitation](#)
- [Flow Cytometry](#)
- [Cell Culture](#)

Anti-PSGL1 / CD162 Reference Antibody (neihulizumab) - Images



Anti-PSGL1 / CD162 Reference Antibody (neihulizumab) on SDS-PAGE under reducing (R) condition. The gel was stained with Coomassie Blue. The purity of the protein is greater than 95%



The purity of Anti-PSGL1 / CD162 Reference Antibody (neihulizumab) is more than 99.48%, determined by SEC-HPLC.