

**Anti-CTLA-4 / CD152 Reference Antibody (quavonlimab)
Recombinant Antibody
Catalog # APR10721****Specification**

Anti-CTLA-4 / CD152 Reference Antibody (quavonlimab) - Product Information

Application	FC, Kinetics, Animal Model
Primary Accession	P16410
Reactivity	Human
Clonality	Monoclonal
Isotype	IgG1
Calculated MW	145 KDa

Anti-CTLA-4 / CD152 Reference Antibody (quavonlimab) - Additional Information**Target/Specificity**
CTLA-4 / CD152**Endotoxin**
< 0.001EU/ µg,determined by LAL method.**Conjugation**
Unconjugated**Expression system**
CHO Cell**Format**
Purified monoclonal antibody supplied in PBS, pH6.0, without preservative.This antibody is purified through a protein A column.**Anti-CTLA-4 / CD152 Reference Antibody (quavonlimab) - Protein Information****Name** CTLA4**Synonyms** CD152**Function**
Inhibitory receptor acting as a major negative regulator of T-cell responses. The affinity of CTLA4 for its natural B7 family ligands, CD80 and CD86, is considerably stronger than the affinity of their cognate stimulatory coreceptor CD28.**Cellular Location**
Cell membrane; Single-pass type I membrane protein. Note=Exists primarily an intracellular antigen whose surface expression is tightly regulated by restricted trafficking to the cell surface and rapid internalization**Tissue Location**

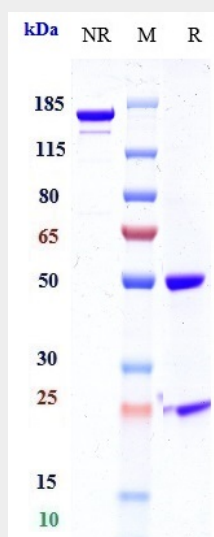
Widely expressed with highest levels in lymphoid tissues. Detected in activated T-cells where expression levels are 30- to 50-fold less than CD28, the stimulatory coreceptor, on the cell surface following activation.

Anti-CTLA-4 / CD152 Reference Antibody (quavonlimab) - Protocols

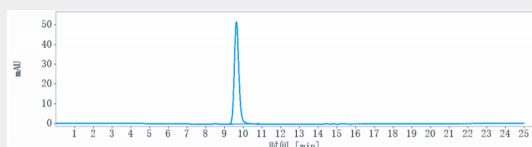
Provided below are standard protocols that you may find useful for product applications.

- [Western Blot](#)
- [Blocking Peptides](#)
- [Dot Blot](#)
- [Immunohistochemistry](#)
- [Immunofluorescence](#)
- [Immunoprecipitation](#)
- [Flow Cytometry](#)
- [Cell Culture](#)

Anti-CTLA-4 / CD152 Reference Antibody (quavonlimab) - Images



Anti-CTLA-4 / CD152 Reference Antibody (quavonlimab) on SDS-PAGE under reducing (R) condition. The gel was stained with Coomassie Blue. The purity of the protein is greater than 90%



The purity of Anti-CTLA-4 / CD152 Reference Antibody (quavonlimab) is more than 95%, determined by SEC-HPLC.