

**Anti-CALCA / CGRP Reference Antibody (fremanezumab)
Recombinant Antibody
Catalog # APR10725****Specification**

Anti-CALCA / CGRP Reference Antibody (fremanezumab) - Product Information

Application	FC, E, FTA
Primary Accession	P06881
Reactivity	Human
Clonality	Monoclonal
Isotype	IgG2SA
Calculated MW	145 KDa

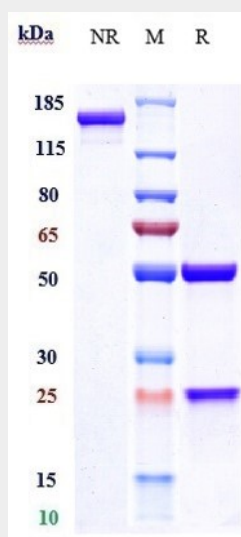
Anti-CALCA / CGRP Reference Antibody (fremanezumab) - Additional Information**Target/Specificity**
CALCA / CGRP**Endotoxin**
< 0.001EU/ µg,determined by LAL method.**Conjugation**
Unconjugated**Expression system**
CHO Cell**Format**
Purified monoclonal antibody supplied in PBS, pH6.0, without preservative.This antibody is purified through a protein A column.**Storage**
-80°C for 2 years under sterile conditions □ -20°C for 1 year under sterile conditions □ Avoid repeated freeze-thaw cycles.**Anti-CALCA / CGRP Reference Antibody (fremanezumab) - Protein Information****Name** CALCA**Synonyms** CALC1**Function**
CGRP induces vasodilation. It dilates a variety of vessels including the coronary, cerebral and systemic vasculature. Its abundance in the CNS also points toward a neurotransmitter or neuromodulator role. It also elevates platelet cAMP.**Cellular Location**
Secreted.

Anti-CALCA / CGRP Reference Antibody (fremanezumab) - Protocols

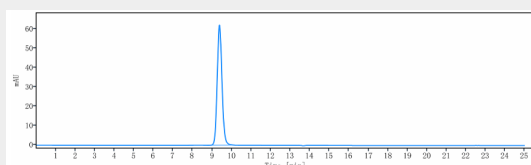
Provided below are standard protocols that you may find useful for product applications.

- [Western Blot](#)
- [Blocking Peptides](#)
- [Dot Blot](#)
- [Immunohistochemistry](#)
- [Immunofluorescence](#)
- [Immunoprecipitation](#)
- [Flow Cytometry](#)
- [Cell Culture](#)

Anti-CALCA / CGRP Reference Antibody (fremanezumab) - Images



Anti-CALCA / CGRP Reference Antibody (fremanezumab) on SDS-PAGE under reducing (R) condition. The gel was stained with Coomassie Blue. The purity of the protein is greater than 95%



The purity of Anti-CALCA / CGRP Reference Antibody (fremanezumab) is more than 100%, determined by SEC-HPLC.