

Anti-IL-22Ra Reference Antibody (ARGX-112)
Recombinant Antibody
Catalog # APR10727**Specification**

Anti-IL-22Ra Reference Antibody (ARGX-112) - Product Information

Application	FC, Kinetics, Animal Model
Primary Accession	Q8N6P7
Reactivity	Human
Clonality	Monoclonal
Isotype	IgG1
Calculated MW	142.34 KDa

Anti-IL-22Ra Reference Antibody (ARGX-112) - Additional Information**Target/Specificity**
IL-22Ra**Endotoxin**
< 0.001EU/ µg,determined by LAL method.**Conjugation**
Unconjugated**Expression system**
CHO Cell**Format**
Purified monoclonal antibody supplied in PBS, pH6.0, without preservative.This antibody is purified through a protein A column.**Anti-IL-22Ra Reference Antibody (ARGX-112) - Protein Information****Name** IL22RA1**Synonyms** IL22R**Function**
Component of the receptor for IL20, IL22 and IL24. Component of IL22 receptor formed by IL22RA1 and IL10RB enabling IL22 signaling via JAK/STAT pathways. IL22 also induces activation of MAPK1/MAPK3 and Akt kinases pathways. Component of one of the receptor for IL20 and IL24 formed by IL22RA1 and IL20RB also signaling through STATs activation. Mediates IL24 antiangiogenic activity as well as IL24 inhibitory effect on endothelial cell tube formation and differentiation.**Cellular Location**
Cell membrane; Single-pass type I membrane protein

Tissue Location

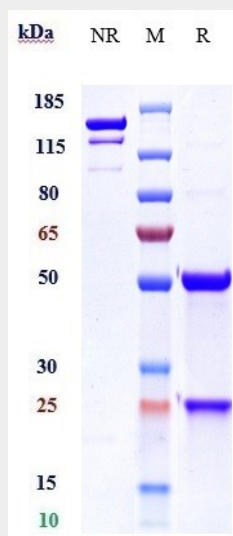
Expressed in colon, liver, lung, pancreas and kidney. No expression in immune cells such as monocytes, T-cells, and NK-cells. Expressed in keratinocytes of normal skin as well as in psoriatic skin lesion. Detected in normal blood brain barrier endothelial cells as well as in multiple sclerosis lesions; Strongly expressed on central nervous system vessels within infiltrated multiple sclerosis lesions. Overexpressed in synovial fluid cells from rheumatoid arthritis and spondyloarthropathy patients

Anti-IL-22Ra Reference Antibody (ARGX-112) - Protocols

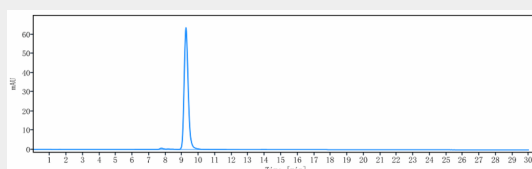
Provided below are standard protocols that you may find useful for product applications.

- [Western Blot](#)
- [Blocking Peptides](#)
- [Dot Blot](#)
- [Immunohistochemistry](#)
- [Immunofluorescence](#)
- [Immunoprecipitation](#)
- [Flow Cytometry](#)
- [Cell Culture](#)

Anti-IL-22Ra Reference Antibody (ARGX-112) - Images



Anti-IL-22Ra Reference Antibody (ARGX-112) on SDS-PAGE under reducing (R) condition. The gel was stained with Coomassie Blue. The purity of the protein is greater than 95%



The purity of Anti-IL-22Ra Reference Antibody (ARGX-112) is more than 98.11%, determined by SEC-HPLC.