

**Anti-GP6 / Glycoprotein-6 Reference Antibody (glenzocimab)
Recombinant Antibody
Catalog # APR10736****Specification**

Anti-GP6 / Glycoprotein-6 Reference Antibody (glenzocimab) - Product Information

Application	FC, Kinetics, Animal Model
Primary Accession	O9HCN6
Reactivity	Human
Clonality	Monoclonal
Isotype	IgG1
Calculated MW	48.29 KDa

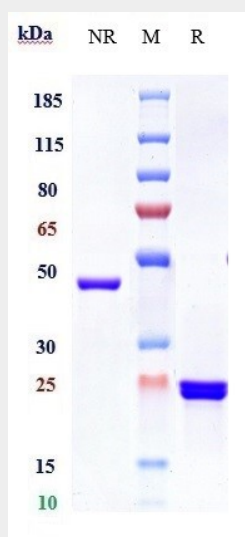
Anti-GP6 / Glycoprotein-6 Reference Antibody (glenzocimab) - Additional Information**Target/Specificity**
GP6 / Glycoprotein-6**Endotoxin**
< 0.001EU/ µg,determined by LAL method.**Conjugation**
Unconjugated**Expression system**
CHO Cell**Format**
Purified monoclonal antibody supplied in PBS, pH6.0, without preservative.This antibody is purified through a protein A column.**Anti-GP6 / Glycoprotein-6 Reference Antibody (glenzocimab) - Protein Information****Name** GP6 ([HGNC:14388](#))**Function**
Collagen receptor involved in collagen-induced platelet adhesion and activation. Plays a key role in platelet procoagulant activity and subsequent thrombin and fibrin formation. This procoagulant function may contribute to arterial and venous thrombus formation. The signaling pathway involves the FcR gamma-chain, the Src kinases (likely FYN or LYN) and SYK, the adapter protein LAT and leads to the activation of PLCG2.**Cellular Location**
[Isoform 1]: Cell membrane; Single-pass membrane protein**Tissue Location**
Megakaryocytes and platelets.

Anti-GP6 / Glycoprotein-6 Reference Antibody (glenzocimab) - Protocols

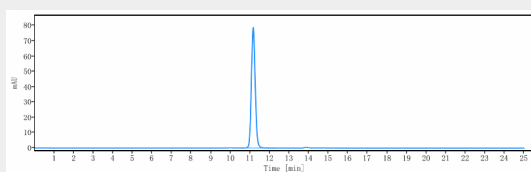
Provided below are standard protocols that you may find useful for product applications.

- [Western Blot](#)
- [Blocking Peptides](#)
- [Dot Blot](#)
- [Immunohistochemistry](#)
- [Immunofluorescence](#)
- [Immunoprecipitation](#)
- [Flow Cytometry](#)
- [Cell Culture](#)

Anti-GP6 / Glycoprotein-6 Reference Antibody (glenzocimab) - Images



Anti-GP6 / Glycoprotein-6 Reference Antibody (glenzocimab) on SDS-PAGE under reducing (R) condition. The gel was stained with Coomassie Blue. The purity of the protein is greater than 90%



The purity of Anti-GP6 / Glycoprotein-6 Reference Antibody (glenzocimab) is more than 100%, determined by SEC-HPLC.